

4M ALUMINIUM DECKING JOIST DECKING FRAME



Cladco 4m aluminium joists are designed to create a supportive substructure for aluminium decking installations. These aluminium joists are powder-coated and reinforce the structure of aluminium decking projects whilst being ultra-lightweight with superior strength when compared to timber or composite joists.



DURABLE POWDER-COATED ALUMINIUM



SUITABLE FOR ALUMINIUM, TIMBER AND COMPOSITE DECKING INSTALLATIONS



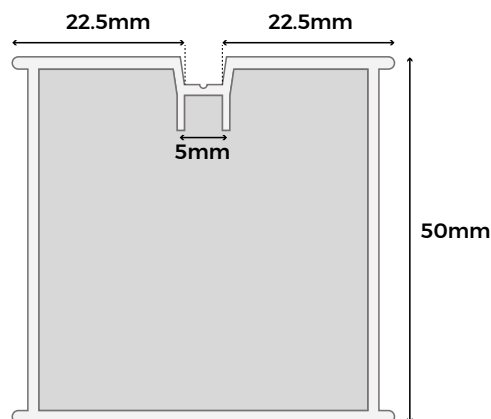
LIGHTWEIGHT AND EASY TO INSTALL

JOIST SPECIFICATIONS

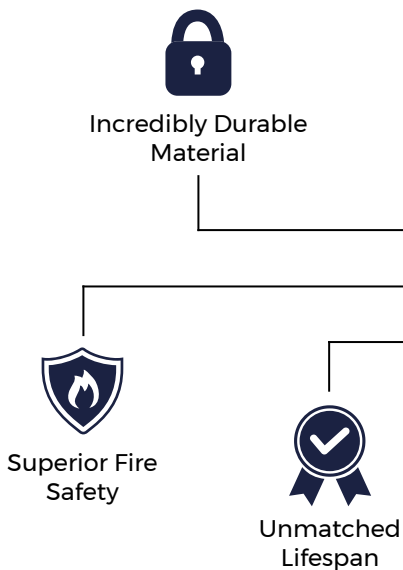
SKU	ALUJB40
Length	4m
Width	50mm x 50mm
Weight	4.04kg (Approx.)
Colour	Black

TEST CERTIFICATIONS

Fire Rating	A2-S1 Rated (EN 13501-1:2018)
-------------	----------------------------------



Please Note: Images are used for illustration purposes only, actual item may vary slightly from the image supplied.



MATERIALS

Manufactured from high-quality powder-coated aluminium these s are hard-wearing, durable, and built to last.



SURFACES

The strong aluminium are concealed within the system to create a secure and level surface for decking applications.



ACCESSORIES

These joists can be used alongside our stainless steel starter clips and hidden clips to produce a seamless aluminium decking installation.



RESISTANCE

Our powder-coated aluminium is A2 fire rated and S1 non-combustible rated, as well as being corrosion resistant.



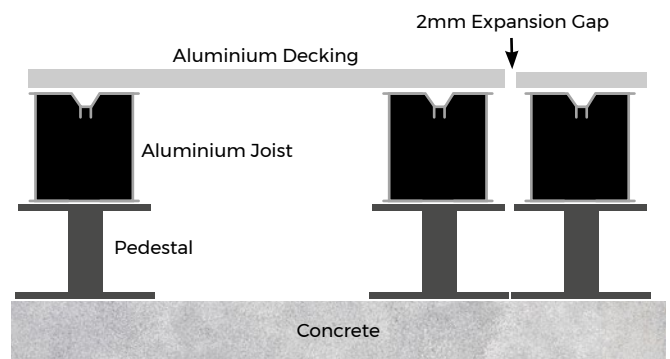
LONG LASTING

Manufactured from powder-coated aluminium, these trims are high-quality, weather-resistant, and built for long-term durability.

INSTALLATION ADVICE

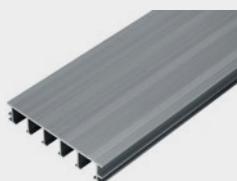
Aluminium joists should be supported by decking pedestals (not supplied) to create a ventilation gap and a slope for drainage. Begin your installation by marking out pedestal positions across the concrete base, placed at a maximum of 600mm apart from centre to centre. Ensure a pedestal is positioned where two joists meet end-to-end.

Where two boards will meet end-to-end, a row of two joists will need to be in place to support the boards. Adjust the height of each pedestal to allow for a drainage gradient (12.5mm fall per metre) and secure them into place on the concrete base.



For full installation guidance, please refer to our online aluminium decking installation guide.

PRODUCT ACCESSORIES



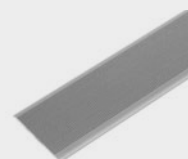
**ALUMINIUM
DECKING BOARDS**



**ALUMINIUM
STARTER CLIPS**



**ALUMINIUM
HIDDEN CLIPS**



**ALUMINIUM
SKIRTING TRIMS**



www.cladco.co.uk
T: 01837 659901 **E:** info@cladco.co.uk

CLADCO
PROFILES