

STAINLESS STEEL STARTER CLIPS

ALUMINIUM RANGE



Cladco stainless steel aluminium decking starter clips ensure an accurate and precise fit when installing aluminium decking against walls or fences. Achieving a perfect fit from the start is essential for a professional and polished decking installation.



**MANUFACTURED FROM
STRONG STAINLESS STEEL**



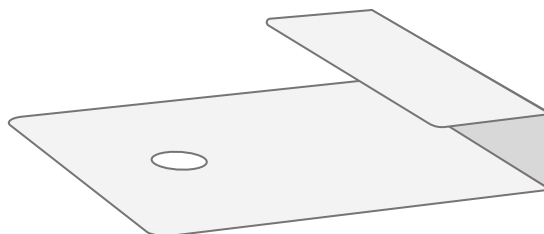
**IDEAL FOR SECURING CLADCO
ALUMINIUM DECKING BOARDS**



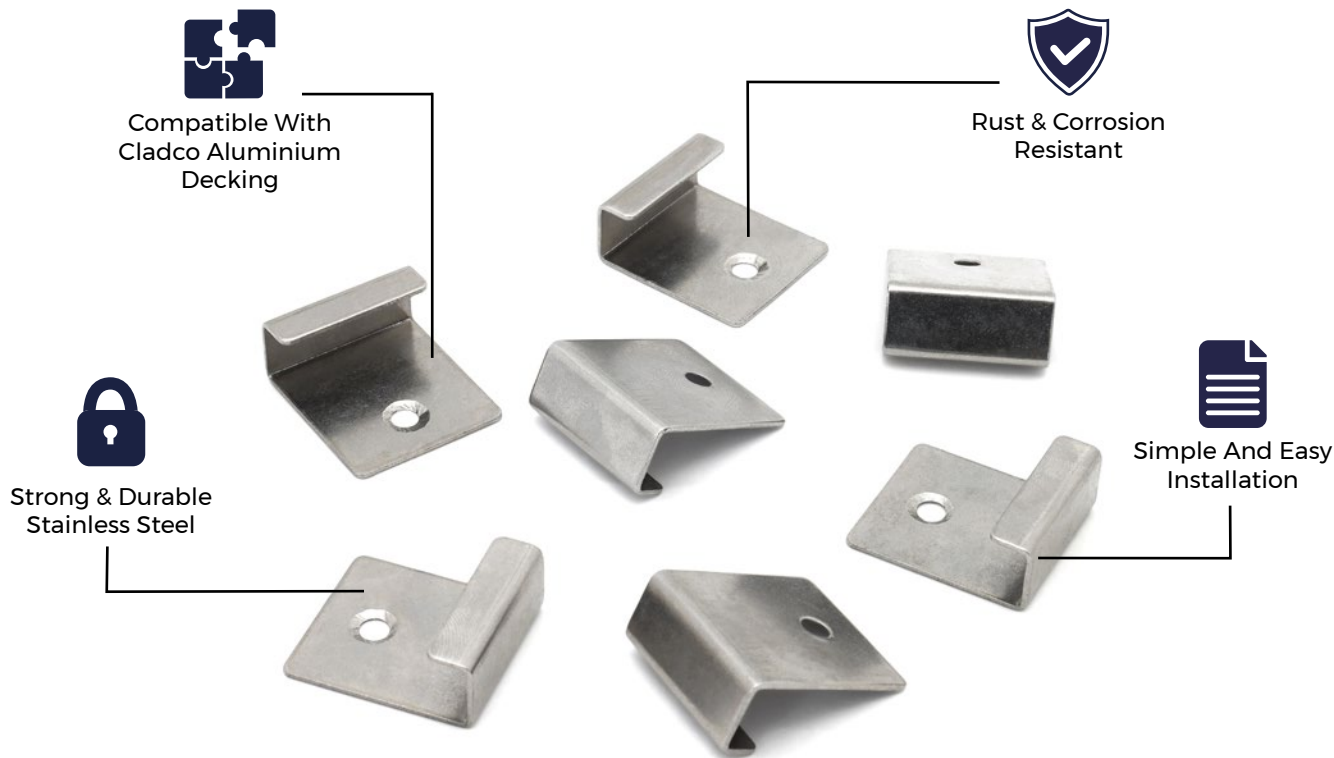
**RUST AND CORROSION RESISTANT
FOR LASTING DURABILITY**

SCREW SPECIFICATIONS

SKU	FIXALUDEKSC
Material	Stainless Steel
Pack Size	50 Per Pack



Please Note: Images are for illustration purposes only. Actual products may vary slightly from those shown.



MATERIALS

The starter clips are made from strong stainless steel, providing maximum strength for a durable decking foundation.



DURABILITY

Designed for long-lasting performance, Cladco stainless steel starter clips resist rust and corrosion, ensuring a secure fit over time with minimal maintenance.



ACCESSORIES

These clips are fully compatible with Cladco aluminium decking boards. For a complete installation, use alongside our stainless steel hidden clips.



LOW MAINTENANCE

Cladco stainless steel clips require minimal upkeep after installation, making them perfect for a fuss-free decking solution.

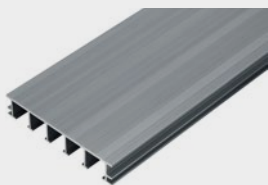


EASY TO USE

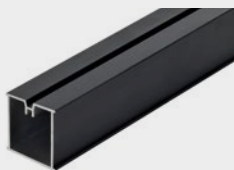
Installation is simple and hassle-free. We recommend using 25mm stainless steel screws (not included) to fix the starter clips securely in place.

Please Note: Screws are not supplied with our starter clips. These stainless steel starter clips are for use on Cladco aluminium decking products only and are not to be used in conjunction with composite or timber decking products.

PRODUCT ACCESSORIES



ALUMINIUM
DECKING BOARD



ALUMINIUM JOIST
50MM X 50MM



STAINLESS STEEL
HIDDEN CLIPS



CLADCO HIGH
STRENGTH ADHESIVE
SEALANT



www.cladco.co.uk
T: 01837 659901 E: info@cladco.co.uk

CLADCO
PROFILES