

# T-CLIPS AND SCREWS SIGNATURE RANGE



The Signature T-clip fixings and screws are ideal for securing your Signature composite decking boards. Precision-made plastic T-clips and stainless steel screws offer resistance to water and corrosion to provide peace of mind about the longevity and security of your Signature composite decking.



MANUFACTURED FROM  
STAINLESS STEEL FOR A  
DURABLE RESULT



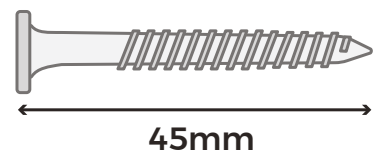
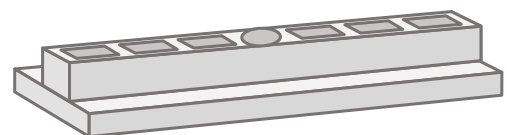
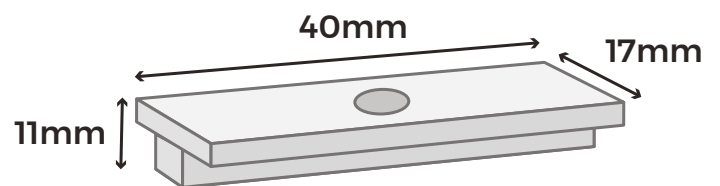
RESISTANT TO CORROSION



EASY INSTALLATION

## T-CLIP AND SCREWS SPECIFICATIONS

SKU	FIXWPC45T
Screw Length	45mm
Board Gap	7mm
Pack	100 (Per pack)
Material	Stainless steel (Screws) Plastic (T-Clips)



**Please Note:** Images are for illustration purposes only. Actual products may vary slightly from those shown.



## MATERIALS

The screws are made from stainless steel to ensure strength and reliability.



## SURFACES

Designed to fit into the grooved edges of the Signature composite decking boards for a clean surface finish.



## ACCESSORIES

Can be installed alongside starter clips to provide strong fixture of your Signature composite decking.



## LOW MAINTENANCE

Once fixed, the T-clips and screws are hidden and protected from weather elements which minimises maintenance.

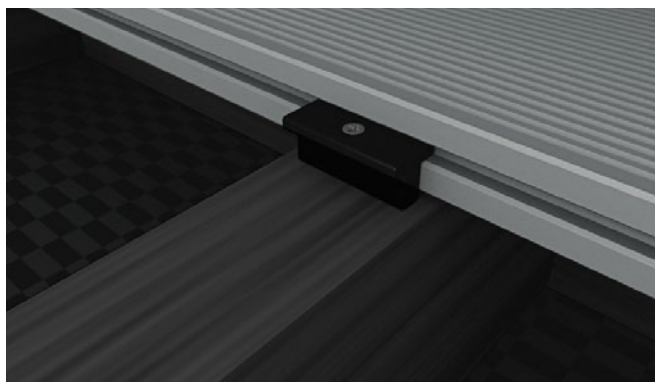


## LONG-LASTING

The materials of both the T-clips and the screws makes them durable an long-lasting for years to come.

### T-Clips

Slot clips into the groove along the side of the board and screw them into the supporting joists with the screws provided, using one clip for each supporting joist. We recommend you use our stainless steel wood screws offering increased wear and less corrosion. Our T-clips provide a 7mm gap between boards, while SS-clips provide a 3mm gap.



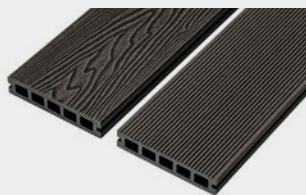
### Last Boards

At butt joints - where the ends of two decking boards meet - you will need to ensure that each board is held in place with its own clip where they meet. Please ensure you leave adequate gaps for expansion and contraction of the boards, in most cases this will need to be at least 7mm. Please view the temperature guide on page 4 of the Signature composite decking installation guide for more information.

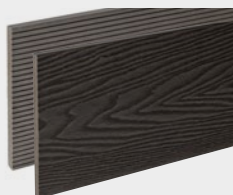


Adhering to these guidelines will help ensure proper installation and longevity of your Signature composite decking. Failure to follow these guidelines will invalidate the product warranty.

## PRODUCT ACCESSORIES



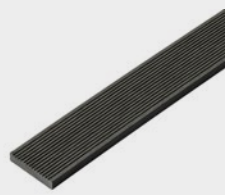
SIGNATURE DECKING  
BOARDS



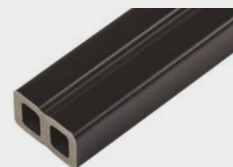
SIGNATURE FASCIA  
BOARDS



SIGNATURE  
CORNER TRIMS



SIGNATURE  
SKIRTING TRIMS



COMPOSITE  
JOISTS



[www.cladco.co.uk](http://www.cladco.co.uk)

T: 01837 659901 E: [info@cladco.co.uk](mailto:info@cladco.co.uk)

**CLADCO**  
PROFILES