

# 4M COMPOSITE BULLNOSE BOARD SIGNATURE RANGE

Cladco bullnose reversible composite decking boards feature a solid core design for enhanced strength and durability, making them ideal for finishing the perimeter of your decking area and constructing steps. Available in 4m lengths and a choice of eight contemporary colours, these boards offer both function and style.

Each board is dual-sided, allowing you to choose between a high-quality woodgrain-effect surface or low-slip narrow grooves to suit your preferred finish.

## COLOUR RANGE

CHARCOAL	TEAK	LIGHT GREY	IVORY
OLIVE GREEN	COFFEE	REDWOOD	STONE GREY

## BOARD SPECIFICATIONS

Length	4m
Width	150mm
Thickness	25mm
Coverage	0.6m <sup>2</sup>
Weight	20.52kg

## TEST CERTIFICATIONS

FSC® Certification	SA-COC-005542
Fire Rating	CFL - s1 (EN 13501-1:2018)
Slip Resistance	<b>DRY</b> - Low-slip potential (Narrow Groove side) <b>WET</b> - Moderate slip potential (Narrow Groove side)

## BOARD SKU

Colour	Length 4m
Charcoal	WPCSB40B
Teak	WPCST40B
Coffee	WPCSC40B
Stone Grey	WPCSS40B
Redwood	WPCSR40B
Olive Green	WPCSO40B
Ivory	WPCSI40B
Light Grey	WPCSL40B



Authentic  
Woodgrain Effect



Environmentally  
Friendly



Comprehensive  
System



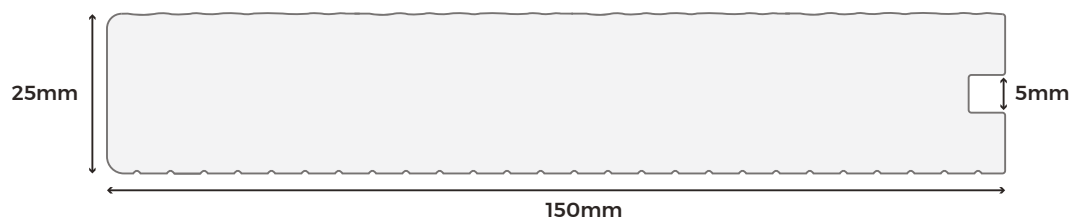
Cost-Effective



Durable And  
Long-Lasting



Narrow Grooves  
Provide A Low-Slip  
Surface





#### MATERIALS

Manufactured from a composite mix of 60% recycled hardwood fibres and 40% recycled plastics for strength, sustainability, and durability.



#### SURFACES

Choose between a woodgrain-effect surface or narrow grooves to suit your outdoor space and style preferences.



#### ACCESSORIES

Complete your Cladco decking area with matching composite fascia boards and trims for a professional, seamless finish.



#### LOW MAINTENANCE

Unlike timber, Cladco composite decking boards require no sealing, staining, or varnishing, making them a low-maintenance alternative.



#### WARRANTY

Cladco composite decking is backed by a 15-year warranty for added confidence and long-lasting performance.

## TEMPERATURE EXPANSION

Cladco composite decking boards naturally expand and contract with changes in temperature. To ensure a long-lasting installation, it is essential to follow our spacing guidelines, particularly at butt joints, where two boards meet end to end.

### RECOMMENDED BUTT JOINT SPACING

- 7mm spacing at temperatures of 5°C and below
- 6mm spacing at temperatures between 5°C and 15°C
- 5mm spacing at temperatures of 15°C and above

Following these recommendations will help accommodate thermal movement and maintain the integrity of your decking installation.

## RECYCLED MATERIALS

Cladco composite decking is manufactured using 100% recycled materials, helping to reduce environmental impact. Each board is made from a sustainable blend of 60% recycled hardwood fibres and 40% recycled, post-consumer plastics, providing long-lasting, low-maintenance benefits.

All Cladco composite products are available as FSC® certified at no additional cost. If you require FSC® certified products, please request this when placing your order.

## AFTERCARE

Over time, Cladco composite decking boards may accumulate dirt and debris from outdoor exposure. To maintain the appearance of your decking:

Use a broom and warm, soapy water to remove everyday dirt, such as leaves, plants, berries, and animal droppings.

For stubborn grime, apply Cladco ultimate composite decking cleaner, a fast-acting foaming formula designed specifically for composite surfaces. If stains persist, pressure washing may be used to help restore the decking's original appearance. Regular cleaning will help preserve the finish and performance of your decking for years to come.



[www.cladco.co.uk](http://www.cladco.co.uk)

T: 01837 659901 E: [info@cladco.co.uk](mailto:info@cladco.co.uk)

**CLADCO**  
PROFILES



## BULLNOSE FINISH

Cladco bullnose composite decking boards are designed specifically for use as border edging around your decking area. Due to natural batch variation and the timber content within the boards, they may not blend seamlessly with flat composite decking surfaces.

For an enhanced finish, we recommend choosing a contrasting colour to create a picture frame effect, helping to define the edges of your decking space with visual impact.

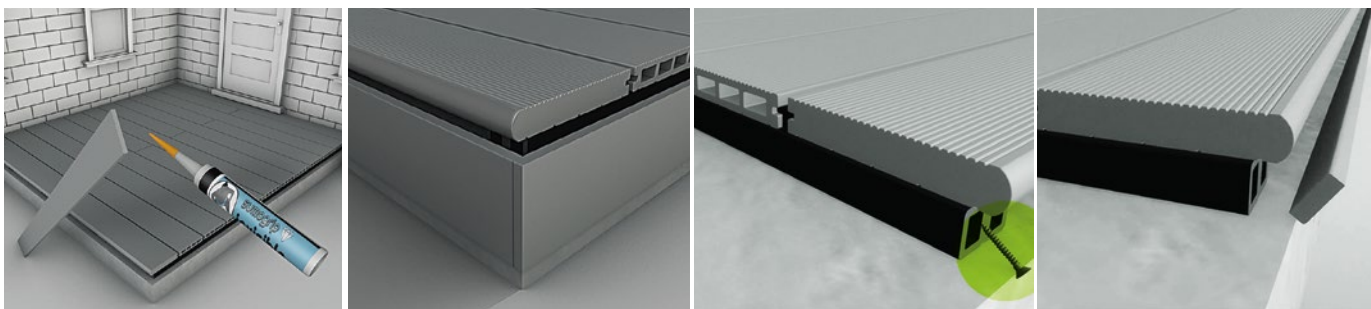
## INSTALLATION ADVICE

### Screw Placement

One row of screws should be used per board, positioned approximately 13mm from each edge. We recommend using 11 screws per 4m bullnose board. A T-clip can also be used internally to help secure the board discreetly.

### Alternative Fixing Method

Alternatively, use 65mm SPEEDDEKZ deck screws, inserted at an angle through the supporting joist beneath the board. To finish the installation neatly, cover the exposed edge with a composite skirting trim.



Adhering to these guidelines will help ensure proper installation and longevity of your composite decking. Failure to follow these guidelines will invalidate the product's warranty.

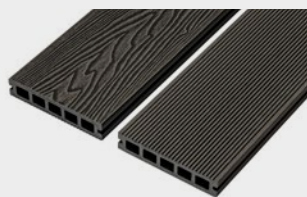
## NATURAL WEATHERING

Cladco composite decking boards contain natural wood fibres and, as a result, will experience colour weathering over time. This process is most noticeable during the first six months after installation, as the boards begin to stabilise in their outdoor environment.

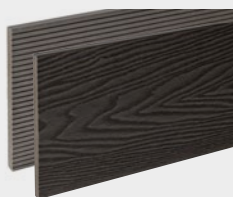
Please note that the appearance of the boards may vary with weather conditions. When wet, boards may appear darker in tone compared to when dry — this is a normal characteristic of composite materials.

For detailed installation information, please refer to our composite decking installation guide available online.

## PRODUCT ACCESSORIES



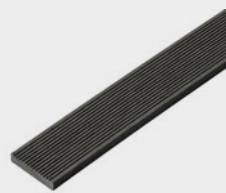
DECKING BOARDS



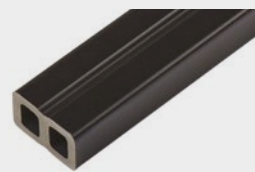
FASCIA BOARDS



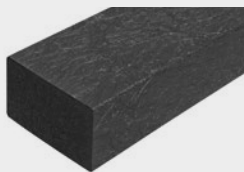
CORNER TRIMS



SKIRTING TRIMS



COMPOSITE JOISTS



RECYCLED  
PLASTIC JOISTS



STAINLESS STEEL  
CLIPS AND SCREWS

11 required per 4m Board



T-CLIP FIXINGS  
AND SCREWS

11 required per 4m Board



SPEEDDEKZ 316  
DECKING SCREWS



[www.cladco.co.uk](http://www.cladco.co.uk)

T: 01837 659901 E: [info@cladco.co.uk](mailto:info@cladco.co.uk)

**CLADCO**  
PROFILES