



# 3.6M COMPOSITE CLADDING BOARD SIGNATURE RANGE

Cladco composite wall cladding boards feature a smooth, plain finish and are available in 3.6m lengths. Offered in eight colours, these durable, low-maintenance boards can be installed horizontally or vertically, making them an ideal solution for enhancing exterior walls of any size.

## COLOUR RANGE

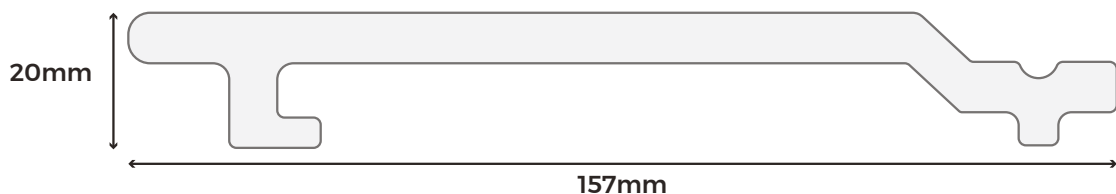
CHARCOAL	TEAK	LIGHT GREY	IVORY
OLIVE GREEN	COFFEE	REDWOOD	STONE GREY

## BOARD SPECIFICATIONS

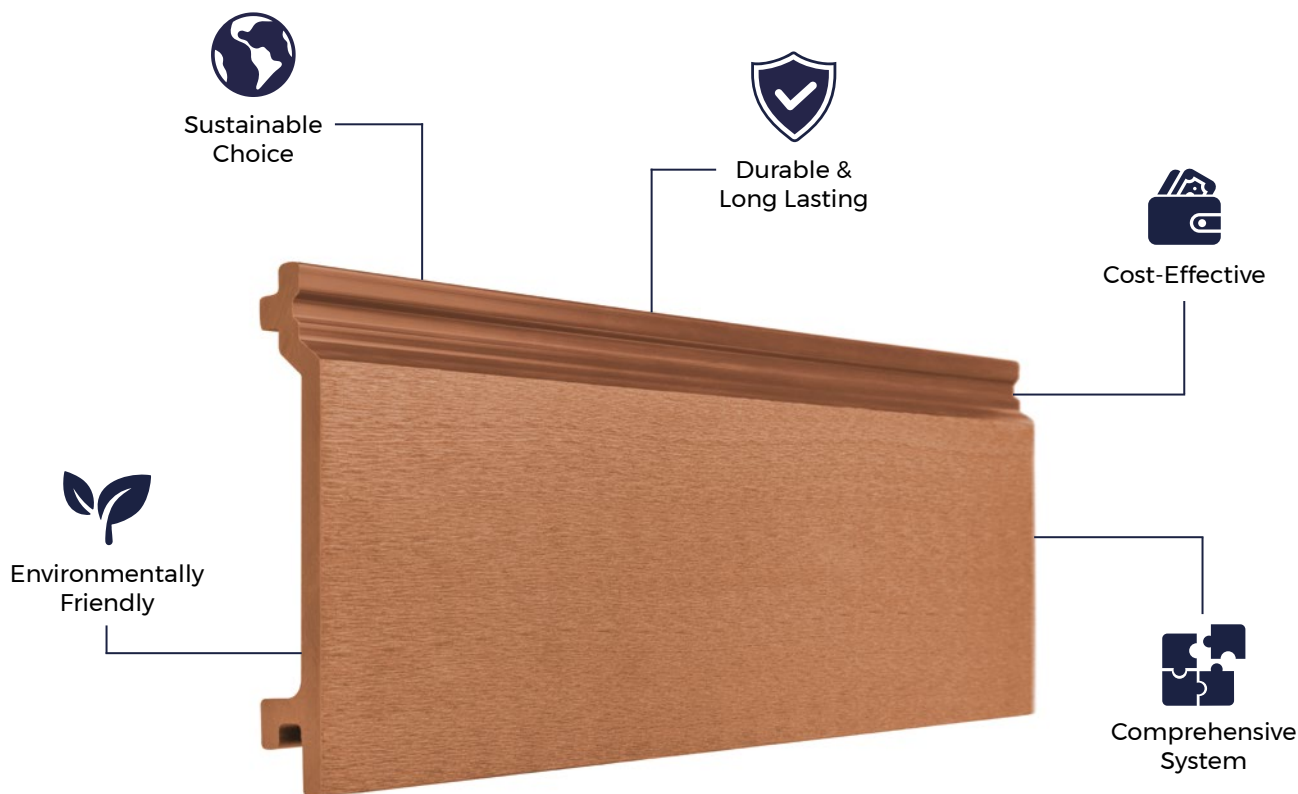
Length	3.6m
Width	157mm
Thickness	20mm
Coverage	0.45m <sup>2</sup>
Weight	6.95kg

## TEST CERTIFICATIONS

FSC® Certification	SA-COC-005542	
SKU	Charcoal Teak Light Grey Ivory Olive Green Coffee Redwood Stone Grey	WPCWB36 WPCWT36 WPCWL36 WPCWI36 WPCWO36 WPCWC36 WPCWR36 WPCWS36



**Please Note:** Images are for illustration purposes only. Actual products may vary slightly from those shown.



#### MATERIALS

Composite wood-plastic mix consisting of 60% hardwood fibres and 40% recycled plastics.



#### SURFACES

Boards feature a smooth composite finish, delivering a sleek and professional cladding design.



#### ACCESSORIES

Complete your Cladco composite wall cladding installation with our matching composite 9corner trims.



#### LOW MAINTENANCE

Unlike timber, Cladco composite wall cladding requires no sealing, staining, or varnishing.



#### WARRANTY

Cladco composite wall cladding is supplied with a 10 year warranty.

## RECYCLED MATERIALS

Cladco composite wall cladding is manufactured from 100% recycled materials, helping to reduce environmental impact. Each board consists of 60% recycled hardwood fibres and 40% recycled post-consumer plastics, providing long-lasting, low-maintenance benefits.

Additional UV stabilisers, colour tints, bonding agents, and additives are incorporated to create a durable and resilient composite cladding board.

All Cladco composite products are available as FSC® certified at no extra cost. Please specify if you require FSC® certification when placing your order.

## AFTERCARE

As with all composite materials, Cladco cladding boards will naturally accumulate dirt when exposed to outdoor conditions. For everyday debris such as leaves, plants, berries, or animal droppings, simply brush the surface and clean with warm, soapy water.

For tougher dirt or grime, gentle pressure washing may be used to restore the cladding's appearance.



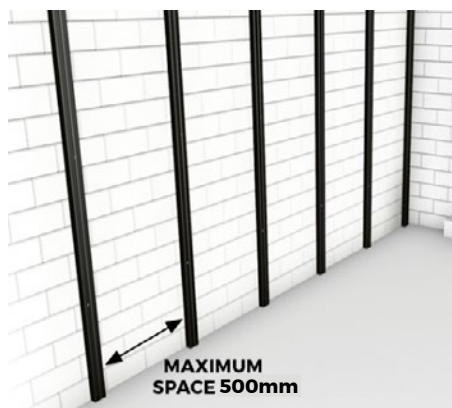
[www.cladco.co.uk](http://www.cladco.co.uk)  
T: 01837 659901 E: [info@cladco.co.uk](mailto:info@cladco.co.uk)

**CLADCO**  
PROFILES

## INSTALLATION ADVICE

### Preparation

Battens should be spaced up to 500mm apart on exterior walls, with additional shorter battens installed every 200mm at gable ends to ensure full support for the composite boards.



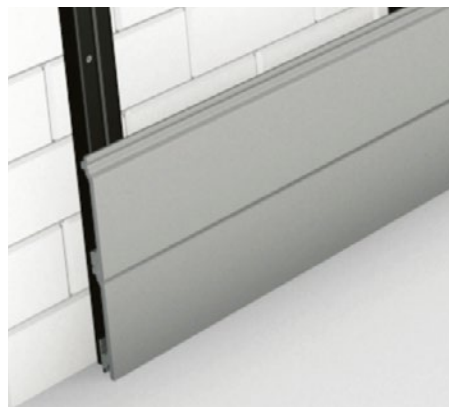
### Pre-Drill Batts

Pre-drill both the battens and the underlying surface using a 6mm drill bit. Cladco composite battens are 30mm high and must be secured at least 50mm into the substrate.



### Securing Boards

Use screws at least 20mm in length to fasten the boards securely to each batten. It is important to hand-tighten the screws to avoid over-tightening, which could damage the boards.



## COLOUR STABILISATION

All Cladco composite products include UV stabilisers; however, due to their natural components, they undergo an initial colour stabilisation process. This may cause some colour changes during the first few months after installation as the product acclimatises to its environment.

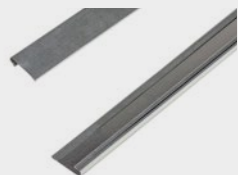
## NATURAL WEATHERING

Cladco composite cladding boards contain natural wood elements and will gradually fade due to weathering over time. This fading is most noticeable within the first six months after installation.

Please note that the appearance of the boards may vary depending on weather conditions, and wet boards will display a different tone compared to when dry.

For detailed information about installation, please read our composite wall cladding installation guide.

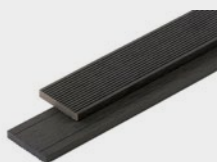
## PRODUCT ACCESSORIES



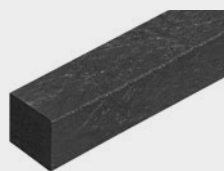
**STARTER STRIPS**



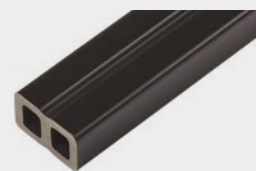
**CORNER TRIMS**



**SKIRTING TRIMS**



**RECYCLED PLASTIC BATTENS**



**COMPOSITE BATTENS**