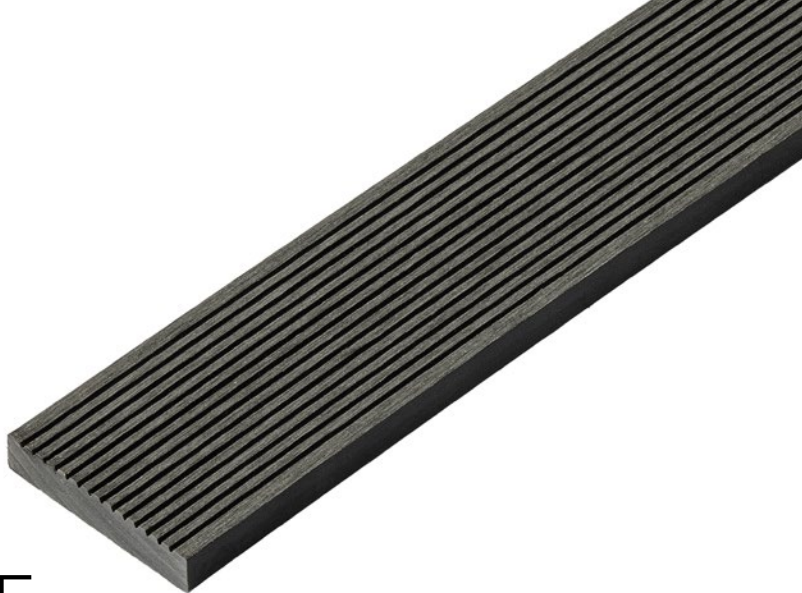


# 2.2M COMPOSITE SKIRTING TRIM SIGNATURE RANGE



Cladco Signature composite skirting trims are used to conceal gaps in your Signature composite decking or cladding project, creating a professional finish. Available in eight colours to match or contrast your decking or cladding design, skirting trims feature narrow-grooves on one side and a smooth surface on the other.

## COLOUR RANGE



## TRIM SPECIFICATIONS

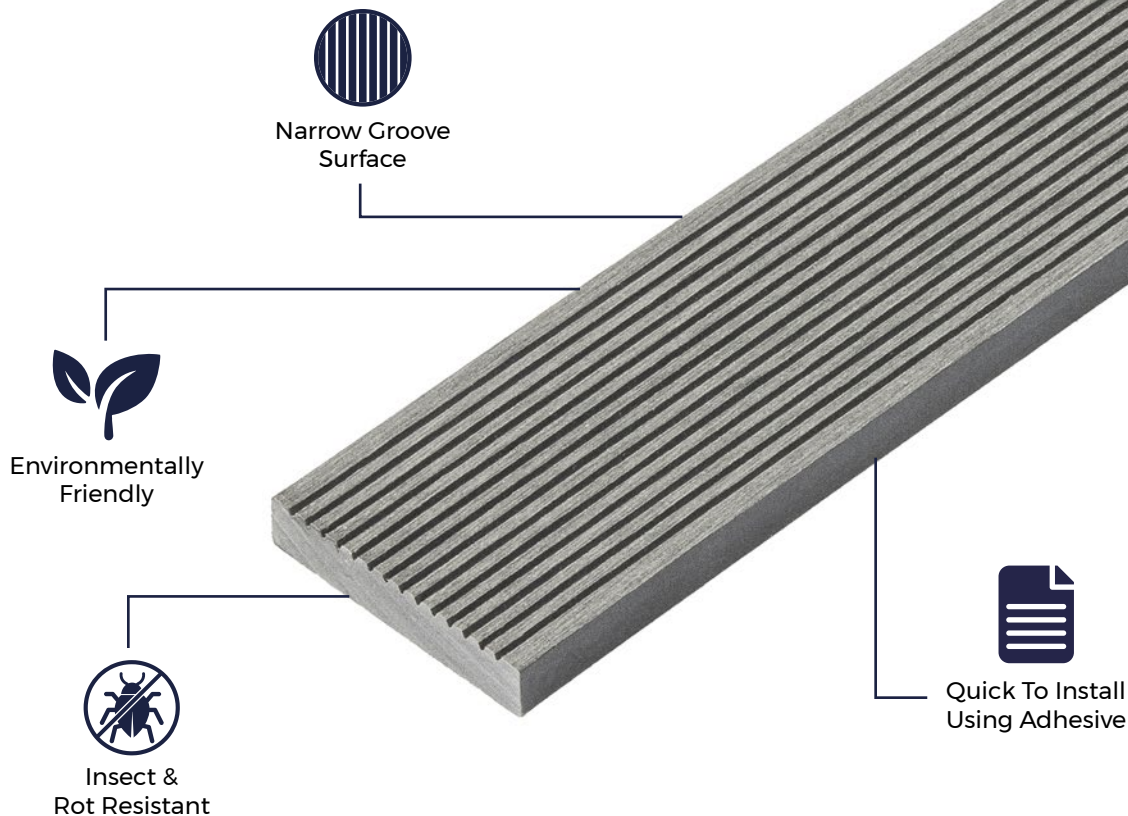
SKU	(Charcoal) WPCTB22 (Teak) WPCTT22 (Coffee) WPCTC22 (Stone Grey) WPCTS22 (Redwood) WPCTR22 (Olive Green) WPCTO22 (Ivory) WPCTI22 (Light Grey) WPCTL22
Length	2.2m
Width	55mm
Thickness	10mm
Weight	1.4kg

## TEST CERTIFICATIONS

FSC® Certification

SA-COC-005542





#### MATERIALS

Composite wood-plastic mix comprising 60% hardwood fibres, 40% recycled plastics.



#### SURFACE

Choice from either a narrow groove surface or a smooth surface for the perfect finish.



#### ACCESSORIES

Signature composite skirting trims can be installed with either Cladco adhesive or fixed using screws.



#### LOW MAINTENANCE

Unlike timber, our range of composite skirting trims do not need to be sealed, stained or varnished.



#### LONG LASTING

Cladco Signature composite skirting trims are a long lasting addition to your decking or cladding project.

## RECYCLED MATERIALS

Cladco Signature composite skirting trims are manufactured using 100% recycled materials, reducing our impact on the environment. A mix of 60% recycled hardwood fibres and 40% recycled, post-consumer plastics provides each trim with low-maintenance and long-lasting benefits.

Additional anti-UV agents, colour tints, bonding agents and additives are used to bind the materials to create a durable composite trim.

All Cladco composite products are available as FSC® certified for the same cost. If you require FSC® certified products, please ask for these when placing your order.

## AFTERCARE

For standard everyday debris such as plants, leaves, berries and animal droppings, simply clear these away with a brush.

Avoid using grit or sand, as well as metal or plastic spades, on your corner trims as they may scratch the surface.



[www.cladco.co.uk](http://www.cladco.co.uk)

T: 01837 659901 E: [info@cladco.co.uk](mailto:info@cladco.co.uk)

**CLADCO**  
PROFILES

## INSTALLATION ADVICE

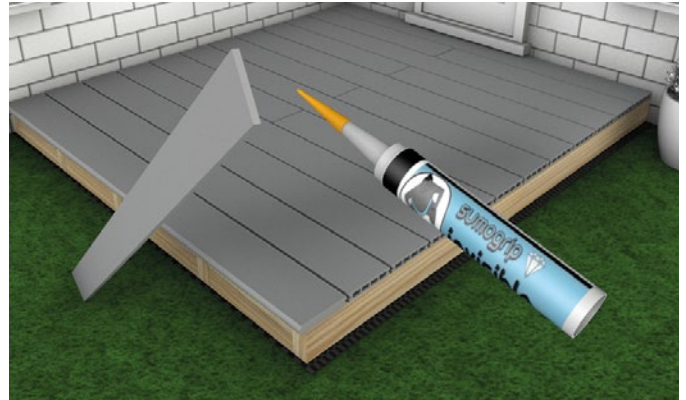
### Cladding Installation

Skirting trims can be cut to size or joined together depending on requirements. Cladco adhesive can then be applied to the trims to secure them to your cladding. To cut, standard woodworking tools will be needed.



### Decking Installation

Two trims can butt together if required. Cladco adhesive will then need to be used along the length of the joist substructure to attach the trim. As a part natural wood product, avoid installing in areas of standing water.



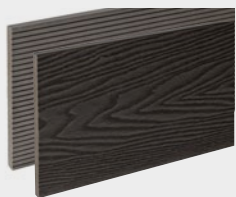
## NATURAL WEATHERING

As Cladco Signature composite skirting trims contain natural wood elements, they will fade from weathering over time. This process is most noticeable within the first six months after installation.

Please be aware that the appearance of composite trims will change depending on weather conditions and, when wet, trims will display a different tone compared to when they are dry.

For detailed information about installation, please read our Signature composite decking or Signature composite cladding installation guide.

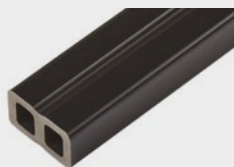
## PRODUCT ACCESSORIES



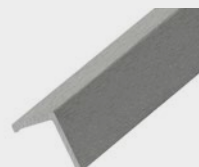
**SIGNATURE COMPOSITE  
FASCIA BOARDS**



**SPEEDDEKZ SCREWS**



**COMPOSITE BATTENS**



**SIGNATURE COMPOSITE  
CORNER TRIMS**



**CLADCO ADHESIVE**