

4M COMPOSITE SOLID DECKING BOARD SIGNATURE RANGE

Cladco solid reversible composite decking offers enhanced sound absorption, making it ideal for high-traffic or commercial decking areas. These 4m commercial-grade boards are available in a choice of eight subtle colours, delivering a long-lasting and professional finish.

Manufactured from a durable composite material, these boards are low-maintenance, splinter-resistant, and rot-resistant, providing a reliable solution for a wide range of outdoor applications

COLOUR RANGE

CHARCOAL	TEAK	LIGHT GREY	IVORY
OLIVE GREEN	COFFEE	REDWOOD	STONE GREY

BOARD SPECIFICATIONS

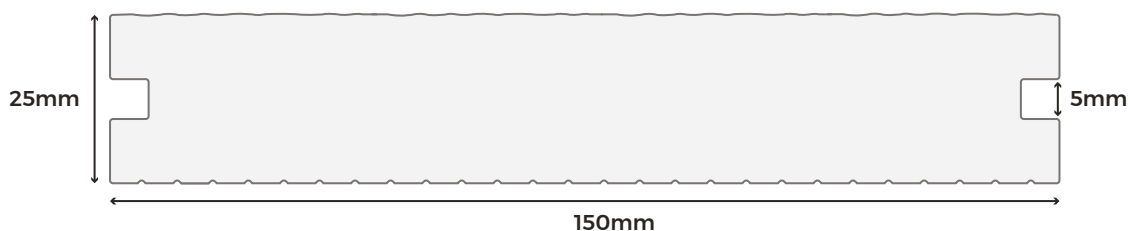
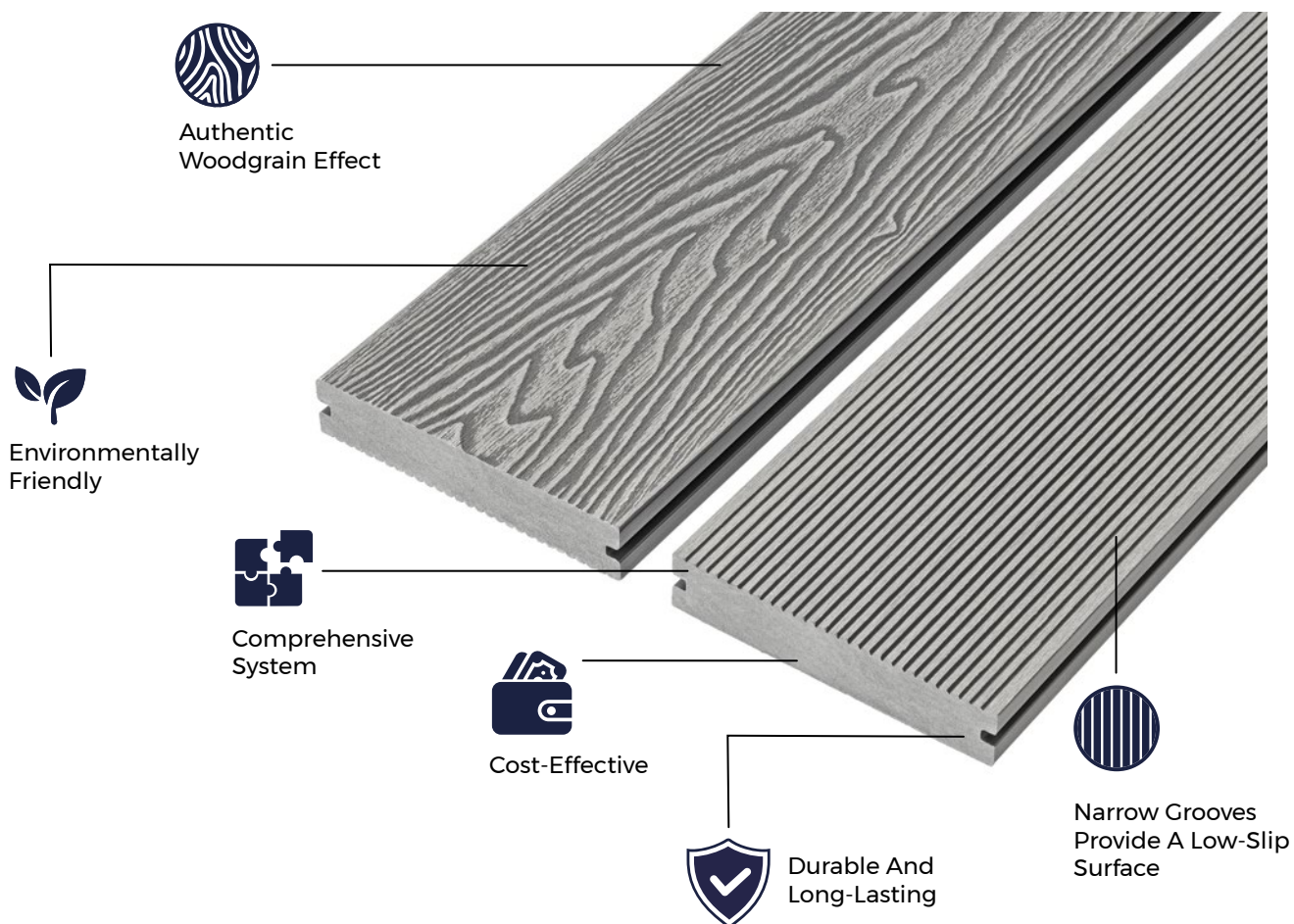
Length	4m
Width	150mm
Thickness	25mm
Coverage	0.6m ²
Weight	20.92kg

TEST CERTIFICATIONS

FSC® Certification	SA-COC-005542
Fire Rating	CFL - s1 (EN 13501-1:2018)
Slip Resistance	DRY - Low-slip potential (narrow groove side) WET - Moderate slip potential (narrow groove side)

BOARD SKU

Colour	Length 4m
Charcoal	WPCSB40
Teak	WPCST40
Coffee	WPCSC40
Stone Grey	WPCS40
Redwood	WPCSR40
Olive Green	WPCSO40
Ivory	WPCSI40
Light Grey	WPCSL40





MATERIALS

Manufactured from a composite mix of 60% recycled hardwood fibres and 40% recycled plastics for strength, durability, and sustainability.



SURFACES

Choose between a woodgrain-effect surface or narrow grooves to suit the style and function of your outdoor space.



ACCESSORIES

Complete your Cladco decking area with matching composite bullnose boards and trims for a clean, professional finish.



LOW MAINTENANCE

Unlike timber, Cladco composite decking boards require no sealing, staining, or varnishing — offering a low-maintenance solution for outdoor spaces.



WARRANTY

Cladco composite decking is supplied with a 15-year warranty for lasting performance and peace of mind.

TEMPERATURE EXPANSION

Cladco composite decking boards naturally expand and contract with changes in temperature. To ensure a long-lasting installation, it is essential to follow our spacing guidelines, particularly at butt joints, where two boards meet end to end.

RECOMMENDED BUTT JOINT SPACING

- 7mm spacing at temperatures of 5°C and below
- 6mm spacing at temperatures between 5°C and 15°C
- 5mm spacing at temperatures of 15°C and above

Following these recommendations will help accommodate thermal movement and maintain the integrity of your decking installation.

RECYCLED MATERIALS

Cladco composite decking is manufactured using 100% recycled materials, helping to reduce environmental impact. Each board is made from a sustainable blend of 60% recycled hardwood fibres and 40% recycled, post-consumer plastics, providing long-lasting, low-maintenance benefits.

All Cladco composite products are available as FSC® certified at no additional cost. If you require FSC® certified products, please request this when placing your order.

AFTERCARE

Over time, Cladco composite decking boards may accumulate dirt and debris from outdoor exposure. To maintain the appearance of your decking:

Use a broom and warm, soapy water to remove everyday dirt, such as leaves, plants, berries, and animal droppings.

For stubborn grime, apply Cladco ultimate composite decking cleaner, a fast-acting foaming formula designed specifically for composite surfaces. If stains persist, pressure washing may be used to help restore the decking's original appearance. Regular cleaning will help preserve the finish and performance of your decking for years to come.

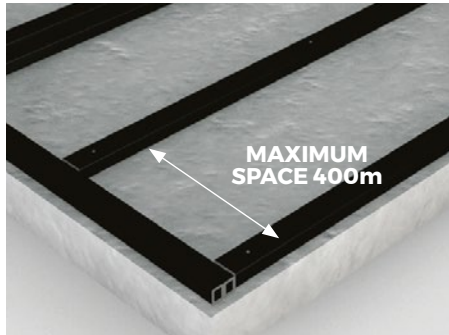
INSTALLATION ADVICE

Joist Spacing

Cladco composite decking joists can be cut and installed using standard woodworking tools. Joists must be securely fastened to a suitable supporting substructure.

Maximum joist spacing: 400mm, centre to centre.

This spacing ensures adequate support and long-term performance of the decking boards.

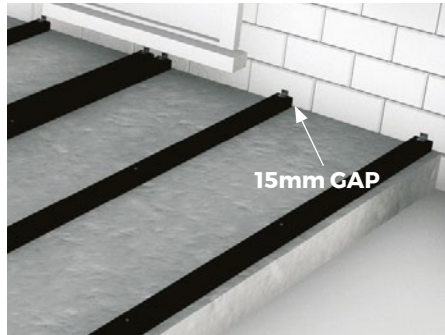


Starter Clips

Starter clips must be fixed to the ends of the composite joists before laying the first decking board.

Leave a 15mm expansion gap between the joists and any walls or fixed structures.

This allows for natural thermal expansion and contraction of the boards.



Butt Joints

For areas where two decking boards meet end to end:

- Double joists must be installed to support both board ends.
- Use fixing clips on each board end — boards should never share a single fixing clip.
- This ensures secure fixing and accommodates expansion at the butt joint.



Following these guidelines is essential to ensure the correct installation and long-term performance of your composite decking. Failure to do so may invalidate the product warranty.

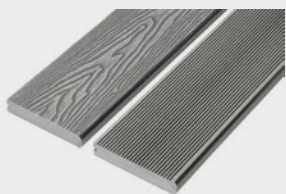
NATURAL WEATHERING

Cladco composite decking boards contain natural wood fibres and, as a result, will experience colour weathering over time. This process is most noticeable during the first six months after installation, as the boards begin to stabilise in their outdoor environment.

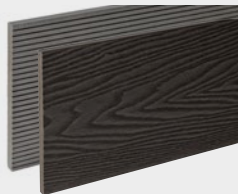
Please note that the appearance of the boards may vary with weather conditions. When wet, boards may appear darker in tone compared to when dry — this is a normal characteristic of composite materials.

For full installation details, please refer to our composite decking installation guide.

PRODUCT ACCESSORIES



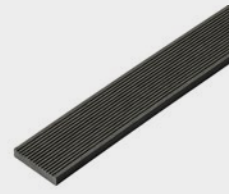
BULLNOSE BOARDS



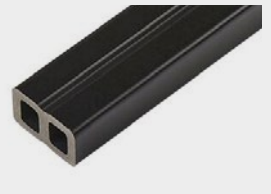
FASCIA BOARDS



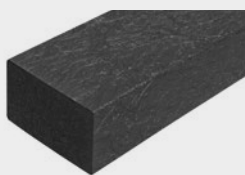
CORNER TRIMS



SKIRTING TRIMS



COMPOSITE JOISTS



RECYCLED
PLASTIC JOISTS



STAINLESS STEEL
CLIPS AND SCREWS

11 required per 4m Board



T-CLIP FIXINGS
AND SCREWS

11 required per 4m Board



STAINLESS STEEL
STARTER CLIPS