

3.6M WOODGRAIN COMPOSITE CLADDING BOARD SIGNATURE RANGE



Cladco Signature composite woodgrain wall cladding features an authentic woodgrain texture that replicates the natural look of traditional timber. Available in eight colours, these durable, low-maintenance boards can be installed horizontally or vertically, making them an ideal choice for enhancing and protecting your building exterior.

COLOUR RANGE

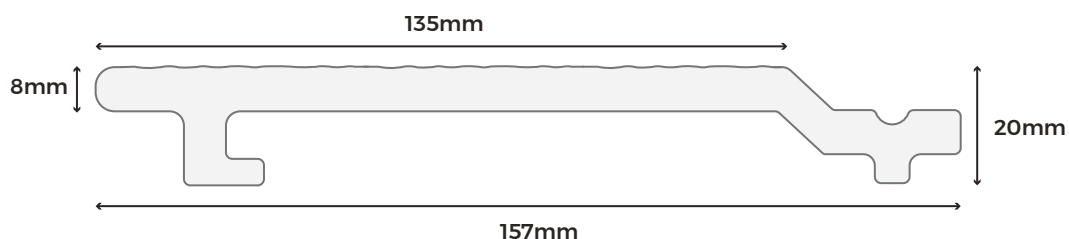


BOARD SPECIFICATIONS

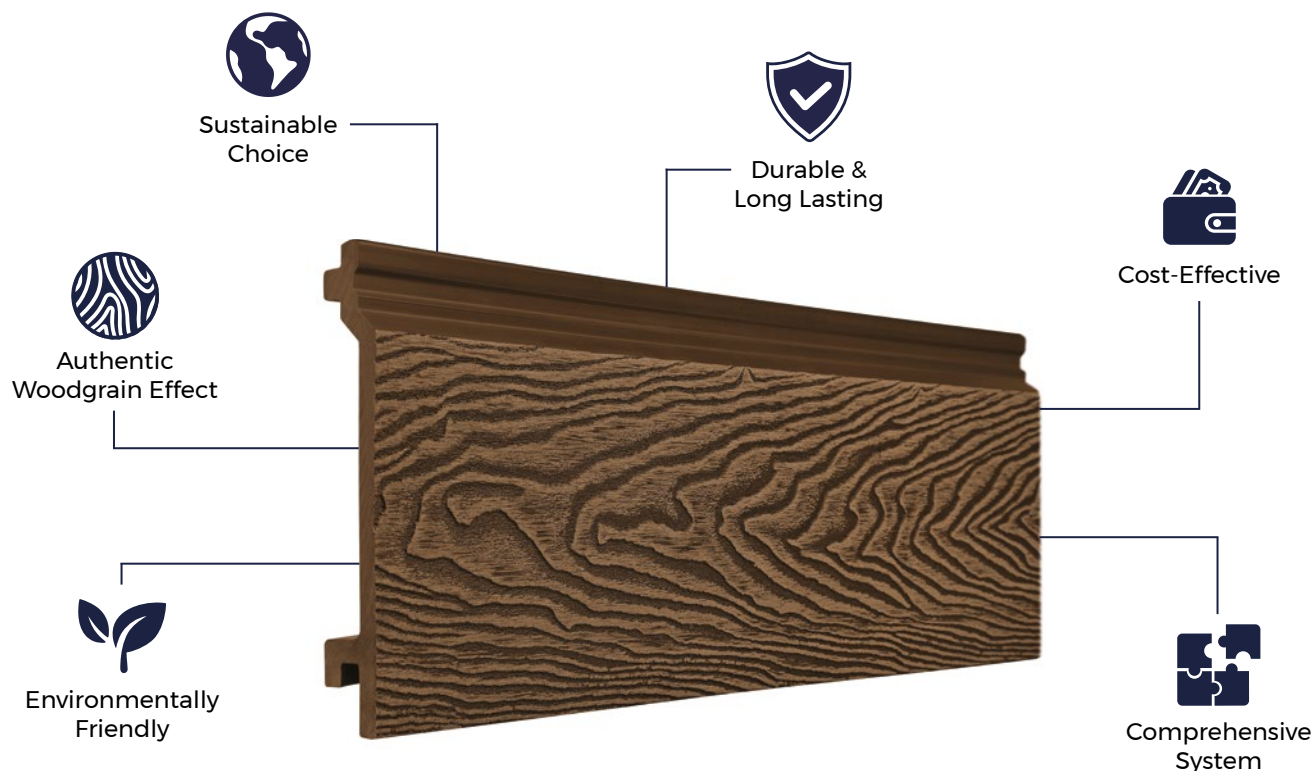
Length	3.6m
Width	157mm
Thickness	20mm
Coverage	0.45m ²
Weight	6.95kg

TEST CERTIFICATIONS

FSC® Certification	SA-COC-005542
SKU	Charcoal Teak Light Grey Ivory Olive Green Coffee Redwood Stone Grey
	WPCWWB36 WPCWWT36 WPCWWL36 WPCWWI36 WPCWWO36 WPCWWC36 WPCWWR36 WPCWWS36



Please Note: Images are for illustration purposes only. Actual products may vary slightly from those shown.



<p>MATERIALS</p> <p>Composite wood-plastic mix consisting of 60% hardwood fibres and 40% recycled plastics.</p>	<p>SURFACES</p> <p>Boards feature an authentic woodgrain-effect surface for a sleek, natural design.</p>	<p>ACCESSORIES</p> <p>Complete your Cladco composite wall cladding installation with our matching composite corner trims.</p>	<p>LOW MAINTENANCE</p> <p>Unlike timber, Cladco composite wall cladding requires no sealing, staining, or varnishing.</p>	<p>WARRANTY</p> <p>Cladco composite wall cladding is supplied with a 10 year warranty.</p>
--	---	--	--	---

RECYCLED MATERIALS

Cladco composite wall cladding is manufactured from 100% recycled materials, helping to reduce environmental impact. Each board consists of 60% recycled hardwood fibres and 40% recycled post-consumer plastics, providing long-lasting, low-maintenance benefits.

Additional UV stabilisers, colour tints, bonding agents, and additives are incorporated to create a durable and resilient composite cladding board.

All Cladco composite products are available as FSC® certified at no extra cost. Please specify if you require FSC® certification when placing your order.

AFTERCARE

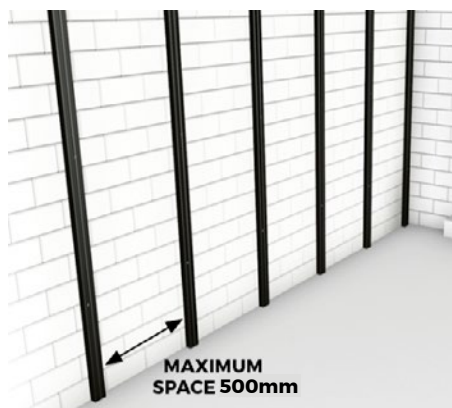
As with all composite materials, Cladco cladding boards will naturally accumulate dirt when exposed to outdoor conditions. For everyday debris such as leaves, plants, berries, or animal droppings, simply brush the surface and clean with warm, soapy water.

For tougher dirt or grime, gentle pressure washing may be used to restore the cladding's appearance.

INSTALLATION ADVICE

Preparation

Battens should be spaced up to 500mm apart on exterior walls, with additional shorter battens installed every 200mm at gable ends to ensure full support for the composite boards.



Pre-Drill Battens

Pre-drill both the battens and the surface below using a 6mm drill bit. Cladco composite battens are 30mm high and should be secured at least 50mm into the substrate.



Securing Boards

Use screws at least 20mm in length to fasten the boards securely to each batten. It is important to hand-tighten the screws to avoid over-tightening, which could damage the boards.



COLOUR STABILISATION

All Cladco composite products contain UV stabilisers; however, due to their natural components, they undergo an initial colour stabilisation process. This may cause some colour changes during the first few months after installation as the product acclimatises to its environment.

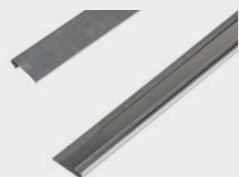
NATURAL WEATHERING

Cladco composite cladding boards include natural wood elements and will gradually fade over time due to weathering. This fading is most noticeable within the first six months after installation.

Please note that the appearance of the boards may vary with changing weather conditions. When wet, the boards may display a different tone compared to when dry.

For detailed information about installation, please read our composite wall cladding installation guide.

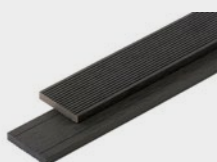
PRODUCT ACCESSORIES



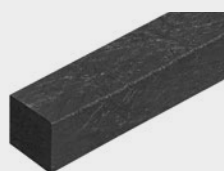
STARTER STRIPS



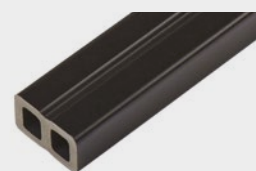
CORNER TRIMS



SKIRTING TRIMS



RECYCLED PLASTIC BATTENS



COMPOSITE BATTENS



www.cladco.co.uk
T: 01837 659901 E: info@cladco.co.uk

CLADCO
PROFILES