



2.4M & 3M BAMBOO DECKING HARDWOOD DECKING

Cladco bamboo hardwood decking offers exceptional strength and durability, making it suitable for a wide range of domestic and commercial applications. Available in 2.4m and 3m lengths, these boards provide a highly sustainable decking solution with a natural hardwood appearance.

COLOUR RANGE

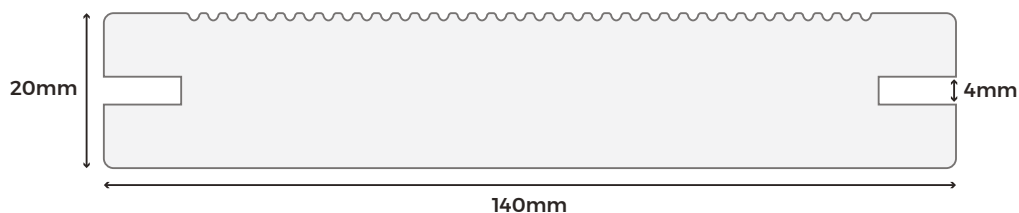
NATURAL
OILED FINISH

BOARD SPECIFICATIONS

SKU	(2.4m) BAM244N (3.5m) BAM305N
Length	2.4m & 3m
Width	140mm
Thickness	20mm
Coverage	0.34m ² (2.44m) 0.43m ² (3.05m)
Weight	7.66kg (2.44m) 9.58kg (3.05m)




TEST CERTIFICATIONS

FSC® Certification	SA-COC-005542
Fire Rating	BFL - s1 (EN 13501-1)
Slip Resistance	DRY - Low-slip potential WET - Low-slip potential
Formaldehyde Emission	E1 (EN 717-1:2004)



Please Note: Images are for illustration purposes only. Actual products may vary slightly from those shown.



 MATERIALS	 SURFACES	 ACCESSORIES	 RESISTANCE	 WARRANTY
Manufactured from bamboo – a fast-growing, sustainable, and renewable resource.	Double-sided board featuring a narrow-grooved finish on one side and a smooth surface on the other.	Install your bamboo decking seamlessly and securely using Cladco starter clips and fixing clip system.	Unlike softwood timber, Cladco bamboo hardwood decking offers enhanced resistance to staining and scratching.	Cladco bamboo hardwood decking is supplied with a 10-year warranty when installed using Cladco clips.

SUSTAINABLE MATERIALS

Cladco bamboo hardwood decking is manufactured from natural bamboo using a combination of high pressure and heat. This process removes pests and insects from the organic materials, ensuring a clean, long-lasting product.

Bamboo offers superior durability when compared to traditional softwood timber decking, while also being a more sustainable material due to its rapid renewability and efficient production.

Cladco bamboo hardwood decking is available as FSC® certified at no additional cost. If you require FSC® certified products, please request this when placing your order.

AFTERCARE

To maintain the appearance and performance of your decking:

Remove everyday debris such as leaves, plants, berries, or animal droppings with a soft broom.

Rinse with clean water to wash away dirt.

Avoid using grit, sand, or metal/plastic spades, as these may scratch the decking surface.

Re-oil the boards every 6-12 months to protect and preserve the hardwood finish.

INSTALLATION ADVICE

Joist Spacing

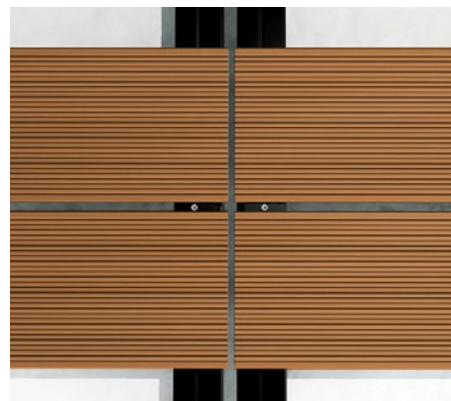
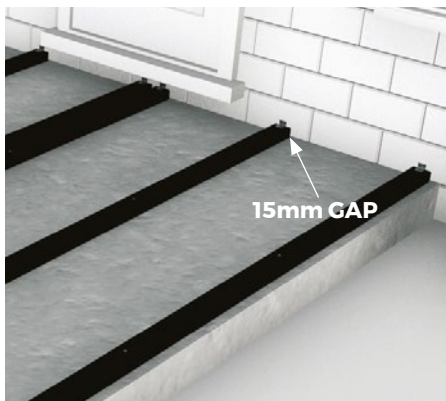
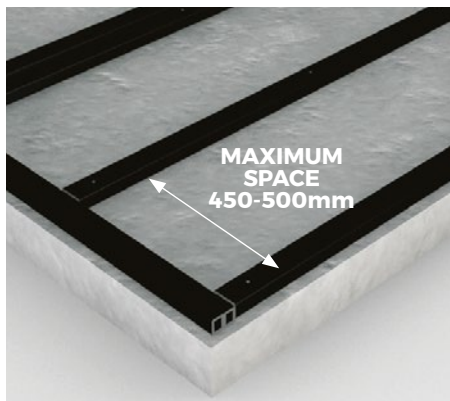
Cladco bamboo hardwood decking boards can be cut, drilled, and installed using standard woodworking tools. Boards should be fixed to a suitable supporting substructure with joist spacings of no more than 450mm to 500mm, centre to centre.

Starter Clips

Starter clips should be fixed to the end of the joists before laying the first cladco bamboo hardwood decking board. Ensure a 15mm expansion gap is left between all walls, fences, and the joist substructure to allow for natural movement.

Board Spacing

Cladco bamboo decking fixing clips ensure boards are installed with consistent spacing for a professional finish. Each decking board should be secured using a fixing clip at every joist where two board ends meet. Ensure a 2mm gap is left between all butt joints to allow for natural expansion and movement.



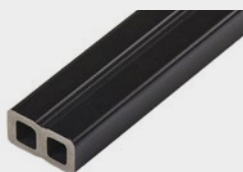
For detailed information about installation, please read our installation guide.

NATURAL WEATHERING

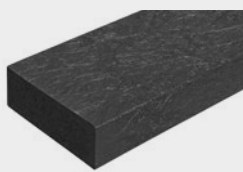
Due to the organic, wood-based composition of Cladco bamboo hardwood decking, some natural weathering is expected over time. The rate and extent of weathering may vary depending on the location and the level of sunlight exposure the decking receives.

This is a normal part of the material's natural character. To help preserve the colour and finish, we recommend regularly re-oiling the surface using a suitable water-based decking oil, typically every 6-12 months.

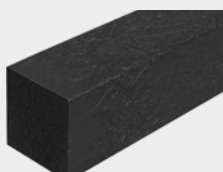
PRODUCT ACCESSORIES



COMPOSITE JOISTS



RECYCLED
PLASTIC JOISTS



RECYCLED
PLASTIC POSTS



BAMBOO DECKING
FIXING CLIPS AND
SCREWS



BAMBOO DECKING
STARTER CLIPS AND
SCREWS