

COMPOSITE FENCE POST CAP SIGNATURE RANGE



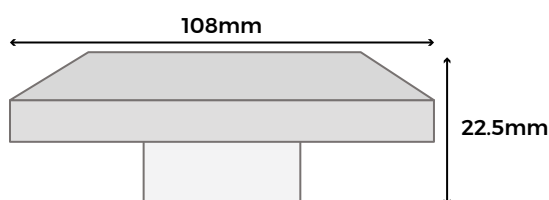
Cladco Signature composite fence post caps are used to top your fence posts. These post caps are made from 100% recycled materials. Four contemporary colours are available to choose from and match your composite fencing, making for an attractive timber alternative.

COLOUR RANGE



CAPS SPECIFICATIONS

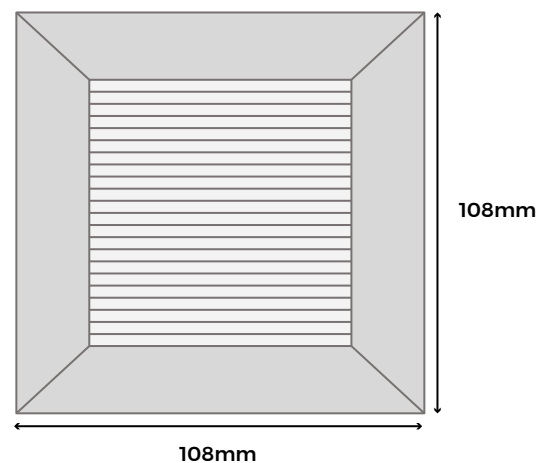
SKU	(Charcoal) WPCFPCB (Teak) WPCFPCT (Coffee) WPCFPCC (Stone Grey) WPCFPCS (Olive Green) WPCFPCO
Length	108mm
Width	108mm
Height	22.5mm



TEST CERTIFICATIONS






FSC® Certification

SA-COC-005542



Please Note: Images are for illustration purposes only. Actual products may vary slightly from those shown.



 <h3>MATERIALS</h3> <p>Composite wood-plastic mix comprising 60% hardwood fibres, 40% recycled plastics.</p>	 <h3>INSECT RESISTANCE</h3> <p>The recycled plastic content in composite fencing resists insects and pest attacks.</p>	 <h3>ACCESSORIES</h3> <p>Complete your Cladco Signature composite fencing with corresponding fencing panels and posts.</p>	 <h3>LOW MAINTENANCE</h3> <p>Cladco Signature composite fencing does not need staining, varnishing or treating.</p>	 <h3>LONG LASTING</h3> <p>Cladco Signature composite fencing is a long lasting addition to your outdoor project.</p>
---	---	---	--	---

RECYCLED MATERIALS

Cladco Signature composite fencing is composed of 100% recycled materials consisting of 60% recycled hardwood fibres and 40% recycled plastic. As post-consumer plastic is utilised in composite fencing, it makes for an environmentally friendly option.

Additives of anti-uv agents, tints and bonding agents are included to bind together the recycled materials, this allows for a sturdy and long-lasting fence.

All Cladco composite products are available as FSC® certified for the same cost. If you require FSC® certified products, please ask for these when placing your order.

All Cladco composite products are available as

FSC® certified for the same cost. If you require FSC® certified products, please ask for these when placing your order.

AFTERCARE

As a composite material, Cladco Signature composite fencing panels will naturally accumulate dirt when exposed to outdoor conditions. For everyday debris such as plants, leaves, berries, or animal droppings, simply brush your fencing with a brush and warm, soapy water.

In cases of more stubborn dirt or grime, pressure washing may be necessary to restore the fencing's appearance.

INSTALLATION ADVICE

Once your Signature composite fencing and posts have been installed, simply place your fence post cap on top of your fence posts.



We recommend a **maximum total fence length of 15 metres** when using Cladco Signature composite fence posts.

Please note: The performance of Signature composite fence posts may be impacted when installed in areas exposed to strong winds or prolonged direct sunlight. For optimal performance and longevity, we recommend installing them in locations with natural shelter from wind and sun.

COLOUR STABILISATION

All Cladco Signature composite products contain UV stabilisers; however, due to their natural elements, all composite products will undergo an initial colour stabilisation process. This may result in some changes in colour during the first few months after installation as the product acclimatises to its environment.

NATURAL WEATHERING

As Cladco Signature composite fencing panels contain natural wood elements, they will fade from weathering over time. This process is most noticeable within the first six months after installation.

Please be aware that the appearance of composite panels will change depending on weather conditions and, when wet, panels will display a different tone compared to when they are dry.

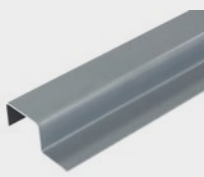
PRODUCT ACCESSORIES



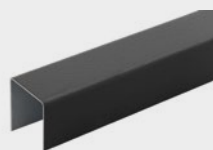
FENCING PANEL



FENCING POSTS



CONCRETE POST
SPACER



SKIRTING TRIMS



STRAIGHT CUT
TIN SNIPS



www.cladco.co.uk

T: 01837 659901 E: info@cladco.co.uk

CLADCO
PROFILES