

3M ASSYMETRIC EXTERNAL CORNER TRIM

FIBRE CEMENT LAP RANGE



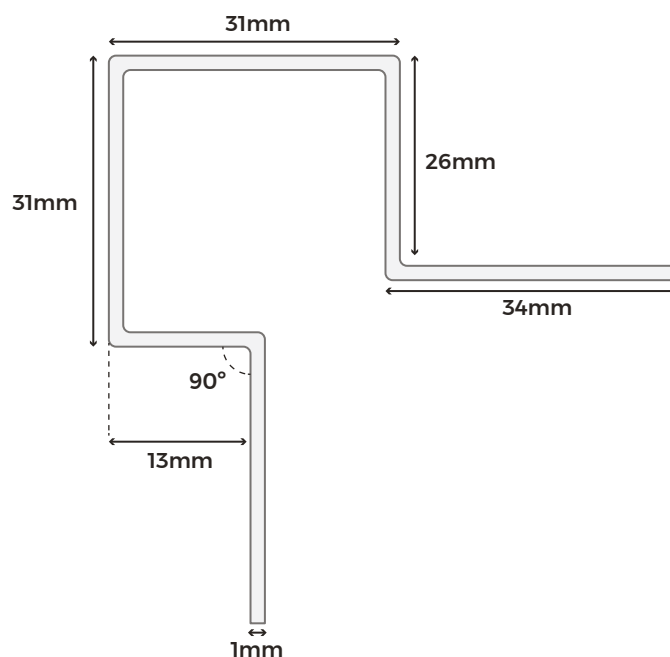
Are you looking to install Cladco fibre cement lap cladding boards around windows and doors? Our aluminium external window and door trims have been designed to protect the corners of your windows and doors while also assisting the fitting of our fibre cement lap cladding boards around these areas.

COLOUR RANGE

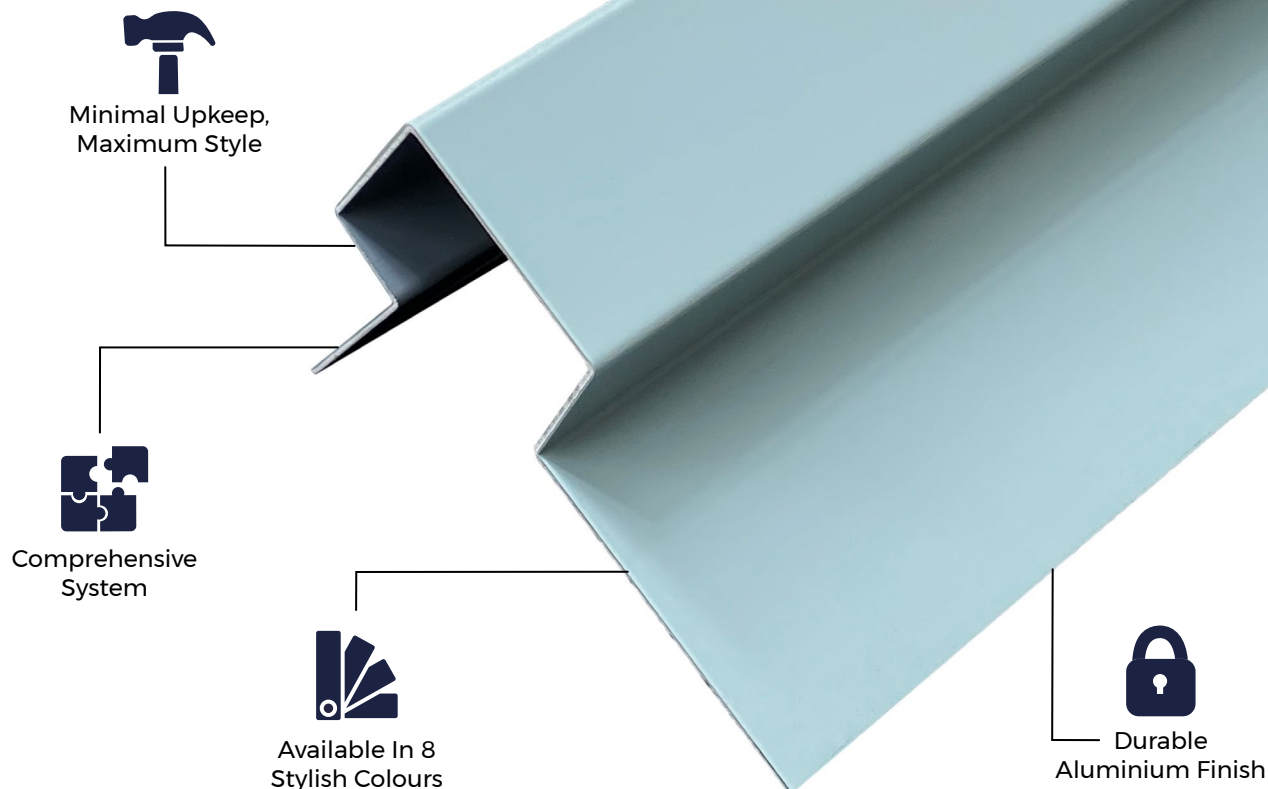


TRIM SPECIFICATIONS

SKU	(Black) FCTRIMACBL-P (Blue) FCTRIMACBG-P (Light Grey) FCTRIMACWG-P (Cream) FCTRIMACCW-P (Slate) FCTRIMACSG-P (Granite) FCTRIMACPE-P (White) FCTRIMACWH-P (Sage Green) FCTRIMACGG-P
Measurements	31mm x 25mm x 25mm x 31mm
Thickness	1mm
Weight	1.53kg (approx.)



Please Note: Images are for illustration purposes only. Actual products may vary slightly from those shown.



MATERIALS

Cladco trims are manufactured onsite using high-quality aluminium for a stain, rust and corrosion resistant product.



SURFACES

The aluminium surfaces are smooth and sleek, providing a refined, modern finish that enhances the overall aesthetic of your installation. This smooth finish also helps prevent dirt and grime buildup, making cleaning quick and easy.



ACCESSORIES

Complete your project with Cladco fibre cement cladding boards, aluminium trims and colour-matched screws.



LOW MAINTENANCE

The trim's flat aluminium surface is quick and easy to clean, helping maintain a neat, attractive finish alongside your fibre cement cladding boards.



INSTALLATION

Easy to install, simply cut the trim to the required length or width of your window or door, allowing space for a windowsill or step if needed, and fix it in place using Cladco fibre cement 38mm screws.

EFFLORESCENCE IN FIBRE CEMENT

Efflorescence is a natural reaction in fibre cement products that can occur when moisture is present on the boards. To minimise this, we recommend storing boards indoors until they are ready for installation. Avoid installing boards while they are wet, as this increases the likelihood of efflorescence.

Ensure proper airflow behind the boards and along the perimeter of the cladding to allow sufficient ventilation. Please note that efflorescence deposits will eventually disappear as wind and rain naturally dissolve them.

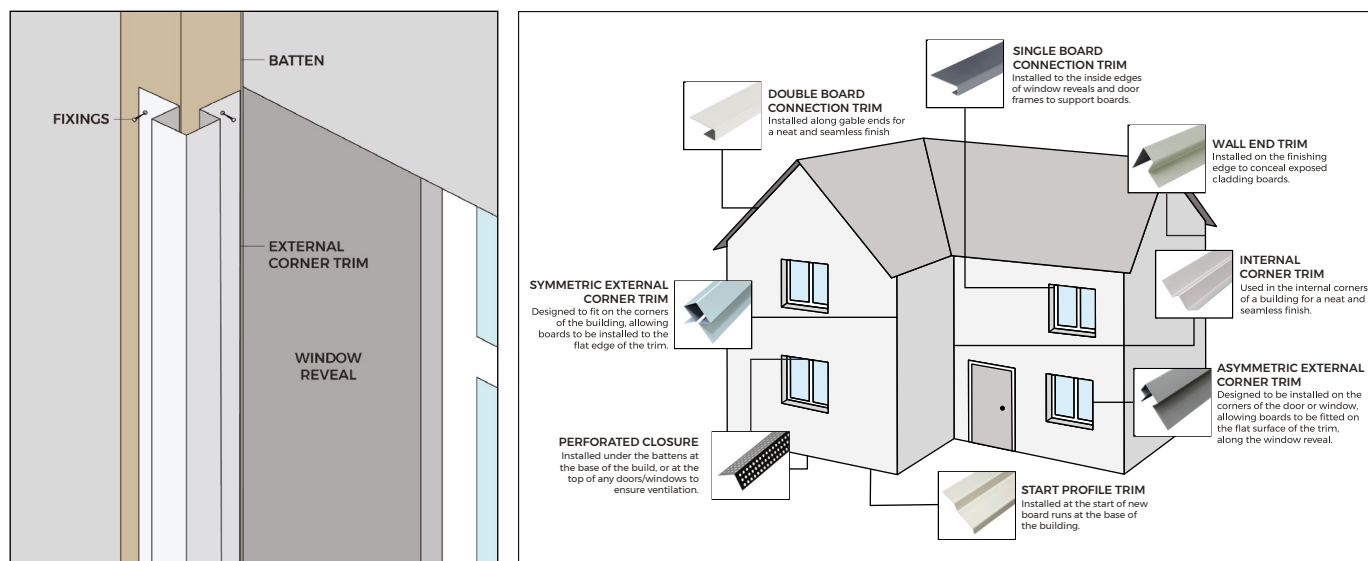
AFTERCARE

To keep your fibre cement boards and aluminium trims in pristine condition, clean them periodically using lukewarm, soapy water with a soft cloth or brush. Always use a gentle detergent, and do not use high-pressure cleaning systems.

For marks or scratches that may accumulate over time or during installation, Cladco fibre cement touch-up paint can be used to restore the surface and maintain a flawless finish.

INSTALLATION ADVICE

To install, simply cut the trim to the required length or width of your window or door, allowing space for a windowsill or step if needed. The flat aluminium edges on both sides are designed to allow fibre cement lap cladding boards to be installed flush against the trim surface and along the reveals of your window or door for a clean, professional finish. Then, fix the trim in place using Cladco fibre cement 38mm screws.



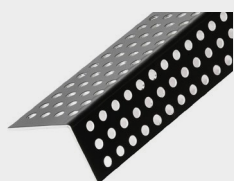
For detailed information about installation, please read our fibre cement lap installation guide.

IMPORTANT NOTICE

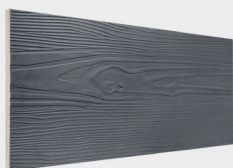
When working with fibre cement materials, it is essential to take proper care and follow necessary safety precautions. Cutting fibre cement boards releases fine dust into the air. While the mineral content itself is harmless, inhaling the dust can pose serious health risks.

To protect yourself, always wear a P3-rated respiratory protective mask when cutting fibre cement boards.

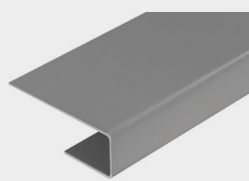
PRODUCT ACCESSORIES



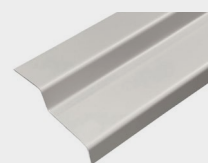
**PERFORATED
CLOSURE**



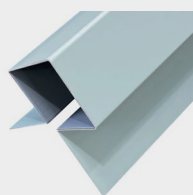
**FIBRE CEMENT
CLADDING BOARD**



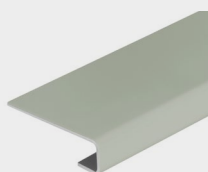
**DOUBLE CONNECTION
TRIM**



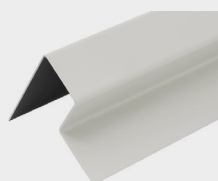
START TRIM



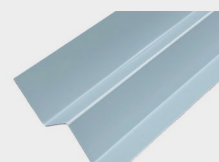
**SYMMETRIC
INTERNAL CORNER
TRIM**



**SINGLE
CONNECTION TRIM**



**WALL END
TRIM**



**INTERNAL CORNER
TRIM**