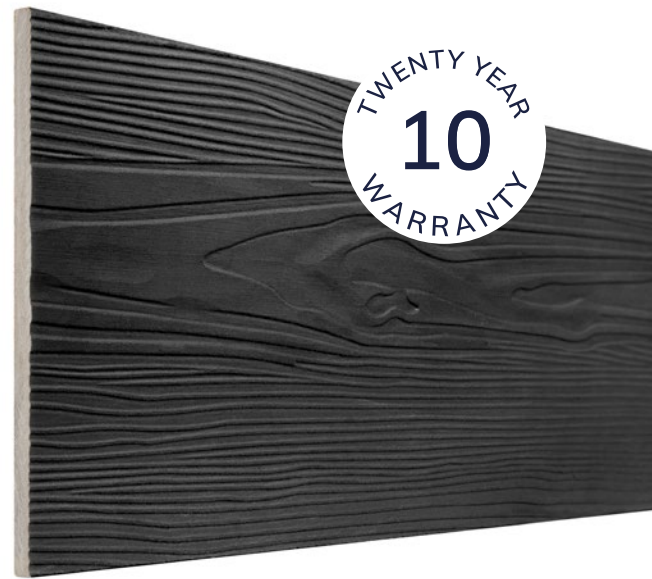


3.6M CLADDING BOARD FIBRE CEMENT LAP RANGE



Cladco fibre cement lap cladding boards are resilient, low-maintenance, and easy to install. Available in eight colours plus an unpainted option for custom finishes, these boards provide excellent protection against harsh weather. Each 3.6m board is designed for installation using the feather-board technique, delivering a durable and attractive exterior finish.

COLOUR RANGE

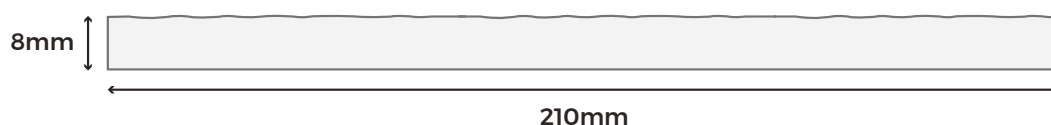


BOARD SPECIFICATIONS

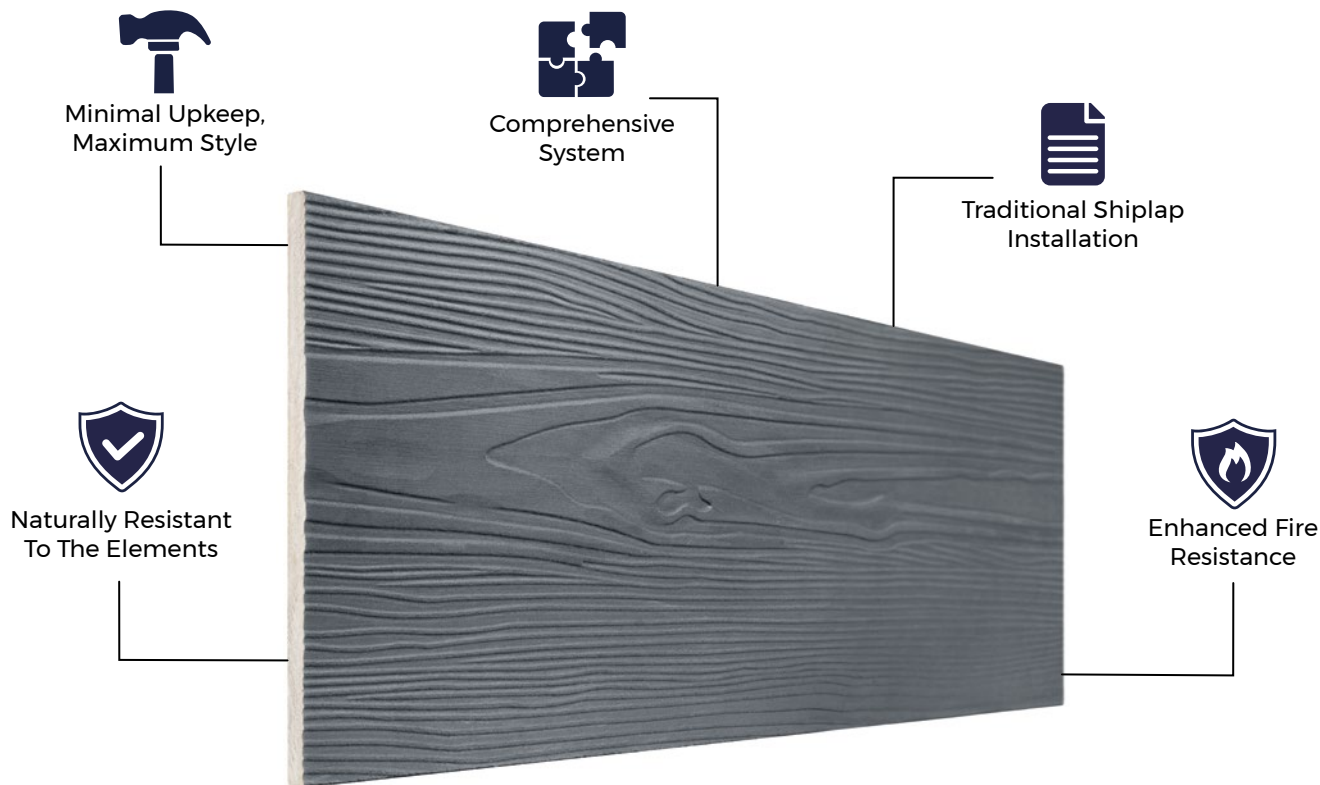
| | |
|-----------|-------------------|
| Length | 3.66m |
| Width | 210mm |
| Thickness | 8mm |
| Coverage | 0.6m ² |
| Weight | 11kg |

TEST CERTIFICATIONS

| | | |
|--------------------|--|--|
| FSC® Certification | | B - s1, d0 (EN 13501-1: 2018) |
| SKU | Black Blue Light Grey Cream Slate Granite White Sage Green Unpainted | FCLWBL36 FCLWBG36 FCLWWG36 FCLWCW36 FCLWSG36 FCLWPE36 FCLWWH36 FCLWGG36 FCLWNP36 |



Please Note: Images are for illustration purposes only. Actual products may vary slightly from those shown.



MATERIALS

Cellulose fibres and cement made with a blend of clay, iron and limestone.



SURFACES

Subtle embossed woodgrain effect design to transform any exterior.



ACCESSORIES

Complete your project with Cladco aluminium trims and colour-matched screws.



LOW MAINTENANCE

Fibre cement lap boards are not prone to damage by mould, pests or rot.



WARRANTY

Cladco fibre cement lap cladding boards come with a 10-year warranty.

DIMENSIONALLY STABLE

The mix of materials used in the manufacturing of Cladco fibre cement lap wall cladding produces a dimensionally-stable board. This results in little to no expansion of the boards when exposed to varying climates and temperatures.

EFFLORESCENCE

Efflorescence is a natural occurrence in fibre cement products when moisture is present on the boards. To minimise this, store boards indoors until installation and avoid installing them while wet, as this increases the likelihood of efflorescence.

Ensure proper airflow behind the boards and along the cladding perimeter to maintain adequate ventilation. Efflorescence deposits will naturally disappear over time as wind and rain dissolve them.

AFTERCARE

To maintain your fibre cement boards in pristine condition, clean periodically with lukewarm, soapy water using a soft cloth or brush. Always use gentle detergents; high-pressure cleaning systems are not recommended.

Cladco fibre cement touch-up paint can be used to conceal marks or scratches that may occur during installation or over time.



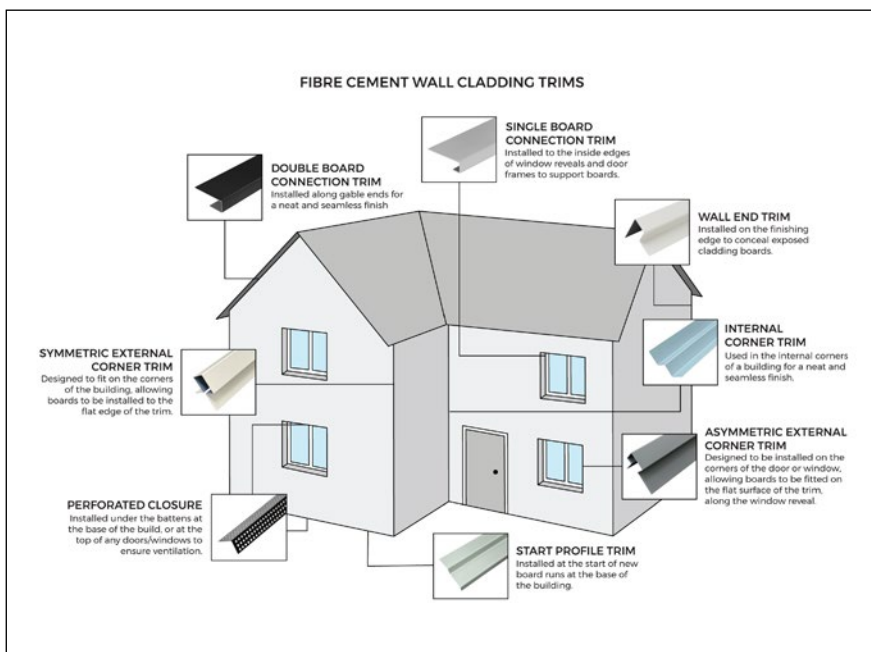
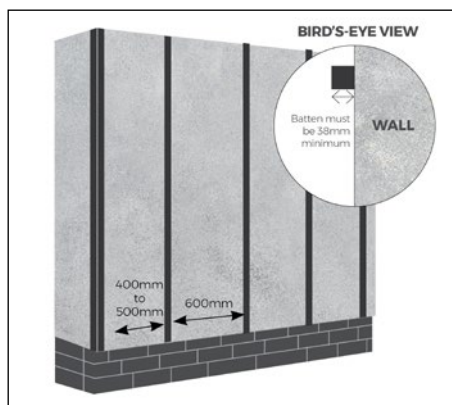
www.cladco.co.uk
T: 01837 659901 E: info@cladco.co.uk

CLADCO
PROFILES

INSTALLATION ADVICE

The Measurements

Before installing any trim - whether symmetric, asymmetric, or wall end trims - be sure to take all preliminary measurements as detailed in our installation guide.



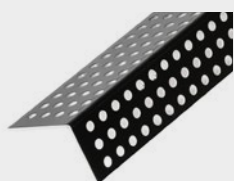
IMPORTANT NOTICE

When working with fibre cement materials, it is essential to take proper care and follow necessary safety precautions. Cutting fibre cement boards releases fine dust into the air. While the mineral content itself is harmless, inhaling the dust poses serious health risks.

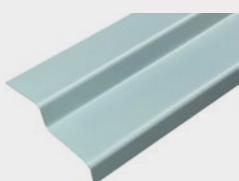
To protect yourself, always wear a P3-rated respiratory protective mask when cutting fibre cement boards.

For detailed information about installation, please read our fibre cement lap installation guide.

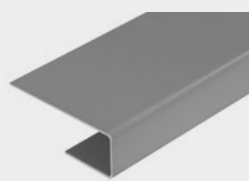
PRODUCT ACCESSORIES



PERFORATED CLOSURE



STARTER TRIM



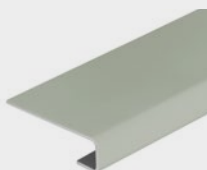
DOUBLE CONNECTION TRIM



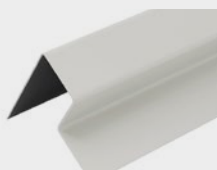
SYMMETRIC EXTERNAL CORNER TRIM



INTERNAL CORNER TRIM



SINGLE CONNECTION TRIM



WALL END TRIM



ASYMMETRIC EXTERNAL CORNER TRIM