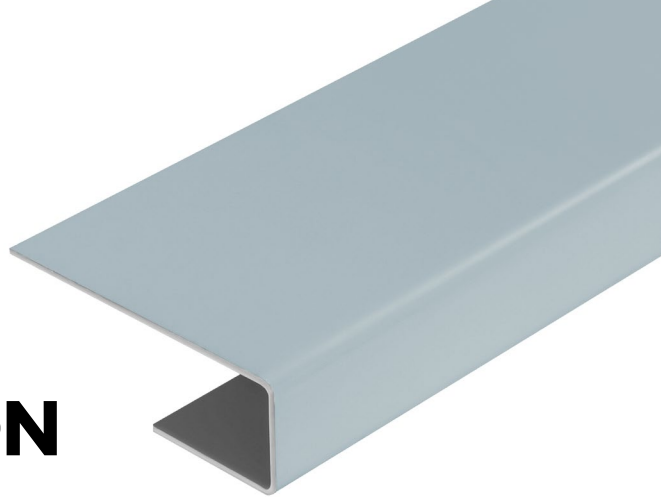


3M DOUBLE BOARD CONNECTION PROFILE TRIM

FIBRE CEMENT LAP RANGE



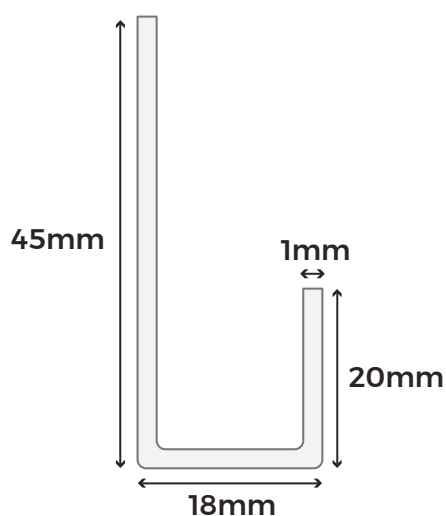
Designed specifically for use with fibre cement lap cladding boards, this 3m double board connection profile trim makes it easier to achieve a consistent featherboard-style finish, particularly at gable ends or around dormer windows. When cladding boards need to be cut at an angle to follow the roofline, this trim conceals the exposed edges and provides a clean, professional finish.

COLOUR RANGE

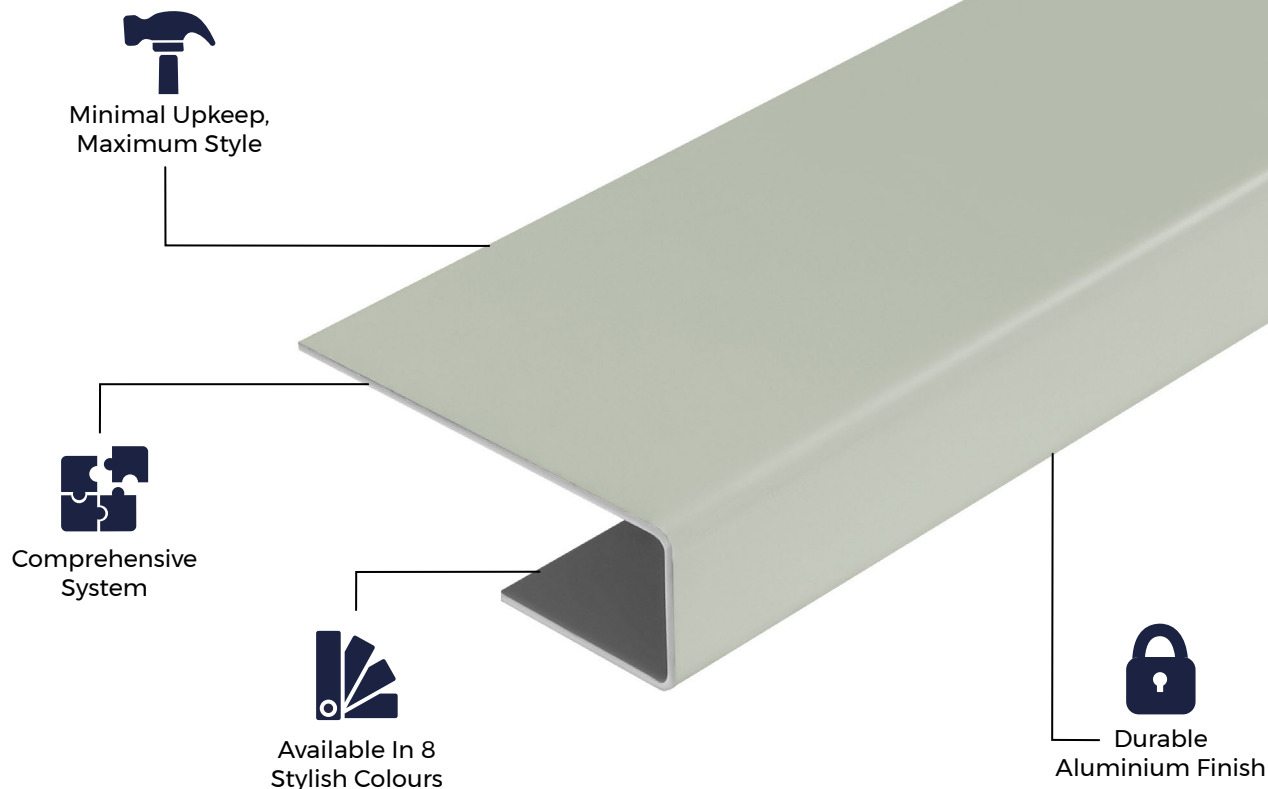


TRIM SPECIFICATIONS

SKU	(Black) FCTRIMDBBL-P (Blue) FCTRIMDBBG-P (Light Grey) FCTRIMDBWG-P (Cream) FCTRIMDBCW-P (Slate) FCTRIMDBSG-P (Granite) FCTRIMDBPE-P (White) FCTRIMDBWH-P (Sage Green) FCTRIMDBGG-P
Length	3m
Measurements	45mm x 18mm x 20mm
Thickness	1mm
Weight	1.53kg (approx.)



Please Note: Images are for illustration purposes only. Actual products may vary slightly from those shown.



MATERIALS

Cladco trims are manufactured onsite using high-quality aluminium for a stain, rust and corrosion resistant product.



SURFACES

The aluminium surfaces are smooth and sleek, providing a refined, modern finish that enhances the overall aesthetic of your installation. This smooth finish also helps prevent dirt and grime buildup, making cleaning quick and easy.



ACCESSORIES

Complete your project with Cladco fibre cement cladding boards, aluminium trims and colour-matched screws.



LOW MAINTENANCE

The trim's flat aluminium surface is quick and easy to clean, helping maintain a neat, attractive finish alongside your fibre cement cladding boards.



INSTALLATION

Use 3m double board connection trims and 39mm screws to cover exposed cuts and improve cladding appearance.

EFFLORESCENCE IN FIBRE CEMENT

Efflorescence is a natural reaction in fibre cement products that can occur when moisture is present on the boards. To minimise this, we recommend storing boards indoors until they are ready for installation. Avoid installing boards while they are wet, as this increases the likelihood of efflorescence.

Ensure proper airflow behind the boards and along the perimeter of the cladding to allow sufficient ventilation. Please note that efflorescence deposits will eventually disappear as wind and rain naturally dissolve them.

AFTERCARE

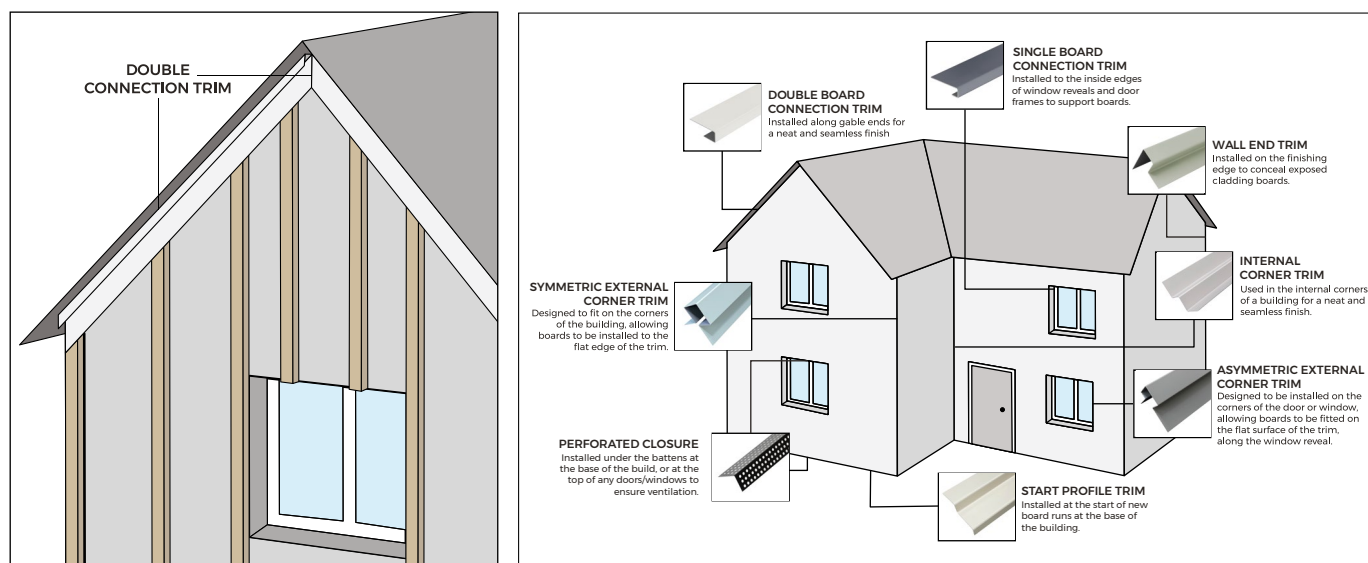
To keep your fibre cement boards and aluminium trims in pristine condition, clean them periodically using lukewarm, soapy water with a soft cloth or brush. Always use a gentle detergent, and do not use high-pressure cleaning systems.

For marks or scratches that may accumulate over time or during installation, Cladco fibre cement touch-up paint can be used to restore the surface and maintain a flawless finish.

INSTALLATION ADVICE

Secure these double board connection profile trims to the roofline at the gable end wall or dormer using 39mm screws. Once installed, the trim will conceal cut board edges for a cleaner, more professional finish.

Each 3m long trim is 1mm thick and can be trimmed to size using Cladco straight-cut tin snips or a metal hacksaw.



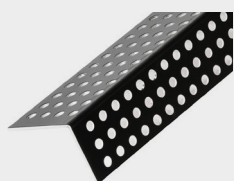
For detailed information about installation, please read our fibre cement lap installation guide.

IMPORTANT NOTICE

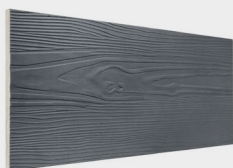
When working with fibre cement materials, it is essential to take proper care and follow necessary safety precautions. Cutting fibre cement boards releases fine dust into the air. While the mineral content itself is harmless, inhaling the dust can pose serious health risks.

To protect yourself, always wear a P3-rated respiratory protective mask when cutting fibre cement boards.

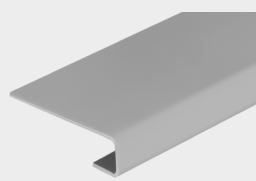
PRODUCT ACCESSORIES



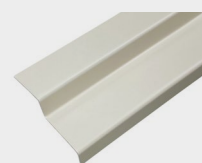
**PERFORATED
CLOSURE**



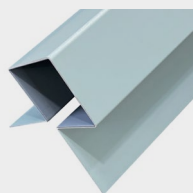
**FIBRE CEMENT
CLADDING BOARD**



**SINGLE CONNECTION
TRIM**



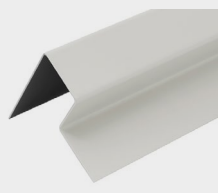
START TRIM



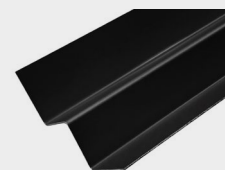
**SYMMETRIC
INTERNAL CORNER
TRIM**



**ASSYMETRIC
EXTERNAL CORNER
TRIM**



**WALL END
TRIM**



**INTERNAL CORNER
TRIM**