

3M INTERNAL CORNER PROFILE TRIM

FIBRE CEMENT LAP RANGE



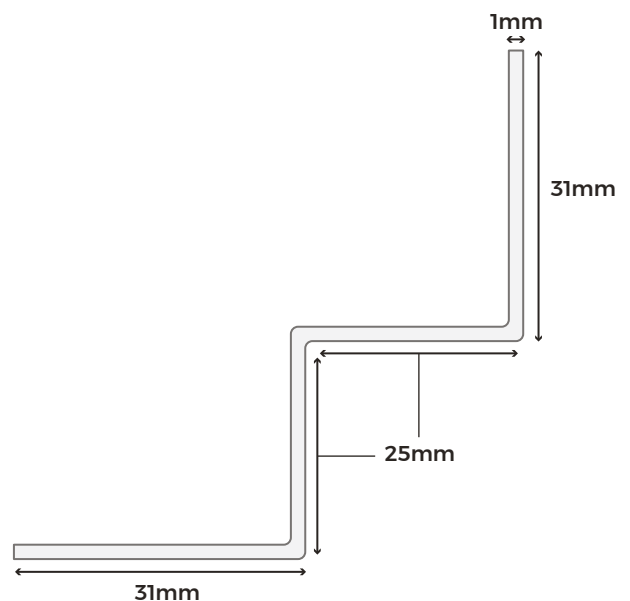
When cladding your home with fibre cement lap wall cladding boards, maintaining consistency and a polished appearance is key. Internal corner trims allow boards to be installed snugly into corners, ensuring a complete and seamless finish.

COLOUR RANGE

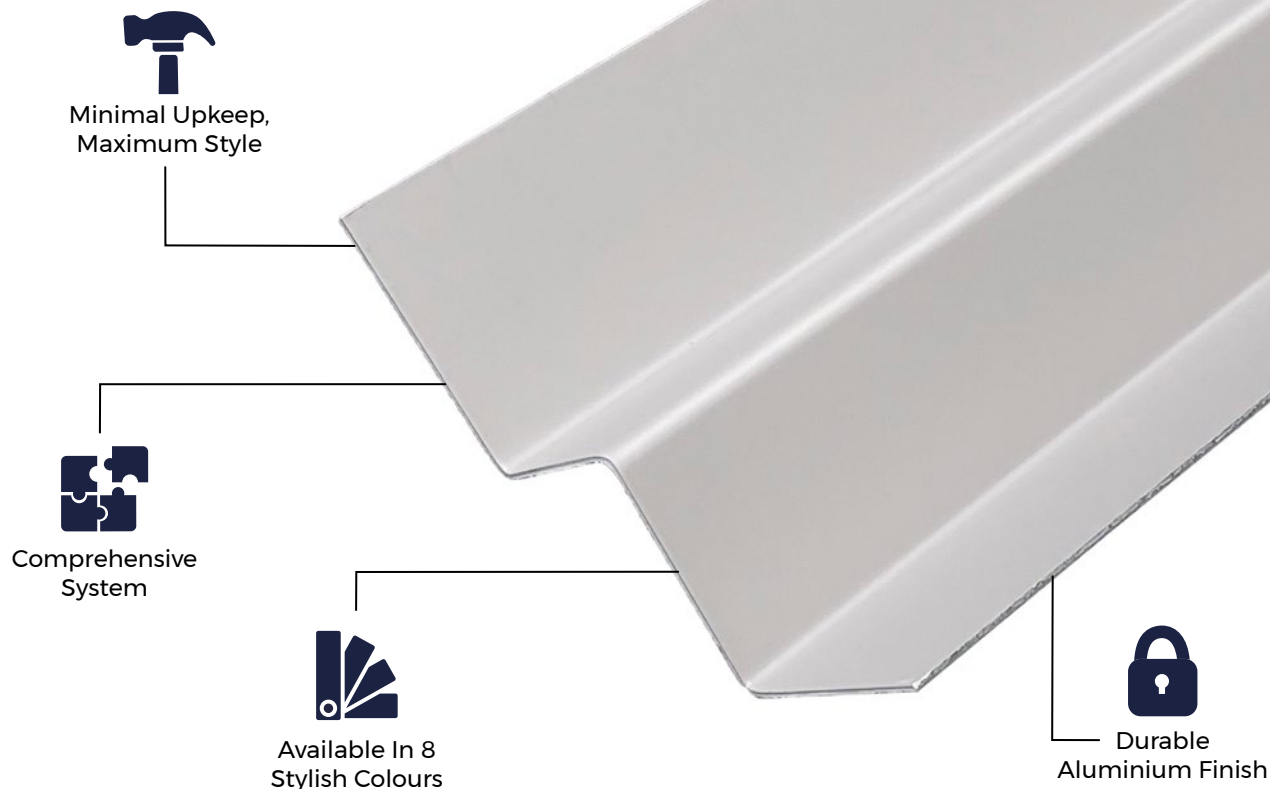


TRIM SPECIFICATIONS

SKU	(Black) FCTRIMICBL-P (Blue) FCTRIMICBG-P (Light Grey) FCTRIMICWG-P (Cream) FCTRIMICCW-P (Slate) FCTRIMICSG-P (Granite) FCTRIMICPE-P (White) FCTRIMICWH-P (Sage Green) FCTRIMICGG-P
Measurements	31mm x 25mm x 25mm x 31mm
Thickness	1mm
Weight	1.53kg (approx.)



Please Note: Images are for illustration purposes only. Actual products may vary slightly from those shown.



MATERIALS

Cladco trims are manufactured onsite using high-quality aluminium, resulting in a stain-, rust-, and corrosion-resistant product.



SURFACES

Cladco aluminium trims feature smooth, sleek surfaces that provide a clean and modern finish. The polished texture not only enhances aesthetic appeal but also helps resist dirt buildup, making cleaning and maintenance quick and easy.



ACCESSORIES

Complete your project with Cladco fibre cement cladding boards, aluminium trims, and colour-matched screws for a seamless, durable, and low-maintenance finish.



LOW MAINTENANCE

The trim's flat aluminium surface is quick and easy to clean, helping maintain a neat, attractive finish alongside your fibre cement cladding boards.



INSTALLATION

This trim is designed to fit into the internal corners of the building. The fibre cement wall cladding boards are installed flush against the flat edges of the trim for a neat and secure finish.

EFFLORESCENCE IN FIBRE CEMENT

Efflorescence is a natural reaction in fibre cement products that can occur when moisture is present on the boards. To minimise this, we recommend storing boards indoors until they are ready for installation. Avoid installing boards while they are wet, as this increases the likelihood of efflorescence.

Ensure proper airflow behind the boards and along the perimeter of the cladding to allow sufficient ventilation. Please note that efflorescence deposits will eventually disappear as wind and rain naturally dissolve them.

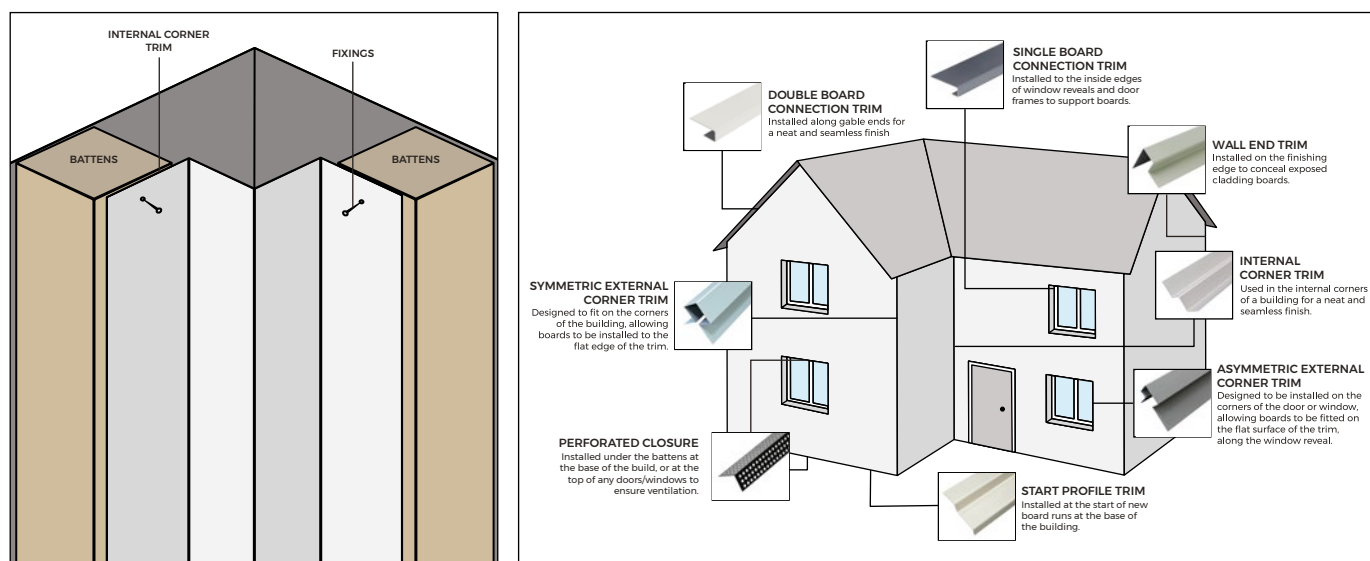
AFTERCARE

To keep your fibre cement boards and aluminium trims in pristine condition, clean them periodically using lukewarm, soapy water with a soft cloth or brush. Always use a gentle detergent, and do not use high-pressure cleaning systems.

For marks or scratches that may accumulate over time or during installation, Cladco fibre cement touch-up paint can be used to restore the surface and maintain a flawless finish.

INSTALLATION ADVICE

Measure the height of all external and internal corners of your building, including the heights of windows and doors. Using Cladco straight cut tin snips, cut the internal corner trims (for internal wall corners) to the correct sizes. Secure each trim in place with 39mm screws.



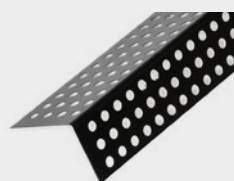
For detailed information about installation, please read our fibre cement lap installation guide.

IMPORTANT NOTICE

When working with fibre cement materials, it is essential to take proper care and follow necessary safety precautions. Cutting fibre cement boards releases fine dust into the air. While the mineral content itself is harmless, inhaling the dust can pose serious health risks.

To protect yourself, always wear a P3-rated respiratory protective mask when cutting fibre cement boards.

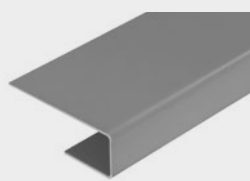
PRODUCT ACCESSORIES



**PERFORATED
CLOSURE**



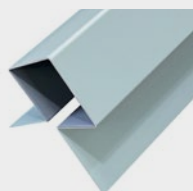
**FIBRE CEMENT
CLADDING BOARD**



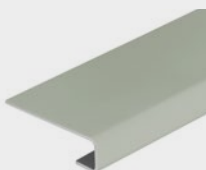
**DOUBLE CONNECTION
TRIM**



START TRIM



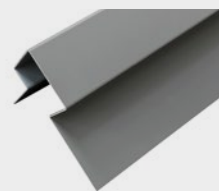
**SYMMETRIC
INTERNAL CORNER
TRIM**



**SINGLE
CONNECTION TRIM**



**WALL END
TRIM**



**ASYMMETRIC
EXTERNAL CORNER
TRIM**