

3M SYMMETRIC EXTERNAL CORNER TRIM

FIBRE CEMENT LAP RANGE



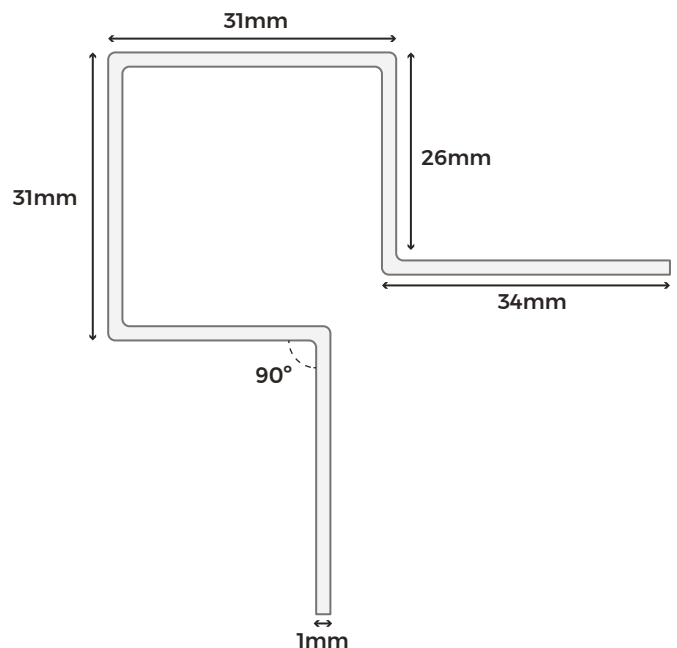
Our cement board cladding trims are specifically designed to be installed with your fibre cement lap boards, protecting corners and edges from damage. Available in seven matching colours, these external corner trims provide a seamless, high-quality finish to your installation.

COLOUR RANGE

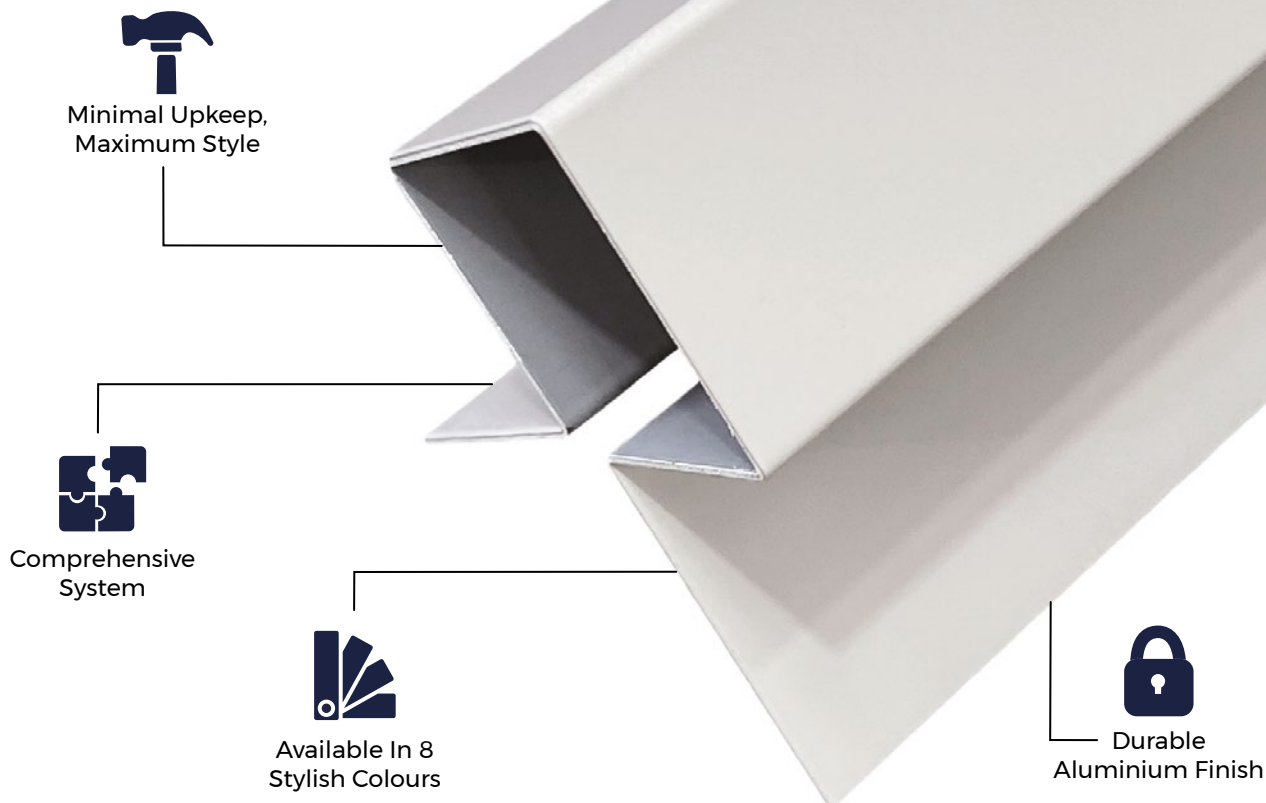


TRIM SPECIFICATIONS

SKU	(Black) FCTRIMECBL-P (Blue) FCTRIMECBG-P (Light Grey) FCTRIMECWG-P (Cream) FCTRIMECCW-P (Slate) FCTRIMECSG-P (Granite) FCTRIMECPE-P (White) FCTRIMECWH-P (Sage Green) FCTRIMECGG-P
Measurements	34mm x 26mm x 31mm x 31mm x 26mm x 34 mm
Thickness	1mm
Weight	1.53kg (approx.)



Please Note: Images are for illustration purposes only. Actual products may vary slightly from those shown.



MATERIALS

Cladco trims are manufactured onsite using high-quality aluminium, resulting in a stain-, rust-, and corrosion-resistant product.



SURFACES

The aluminium surfaces are smooth and sleek, providing a refined, modern finish that enhances the overall aesthetic of your installation. This smooth finish also helps prevent dirt and grime buildup, making cleaning quick and easy.



ACCESSORIES

Complete your project with Cladco fibre cement cladding boards, aluminium trims, and colour-matched screws for a seamless, professional finish.



LOW MAINTENANCE

The trim's flat aluminium surface is quick and easy to clean, helping maintain a neat, attractive finish alongside your fibre cement cladding boards.



INSTALLATION

This trim is designed to fit on the external corners of the building. The fibre cement wall cladding boards are installed flush against the flat edges of the trim for a secure and neat finish.

EFFLORESCENCE IN FIBRE CEMENT

Efflorescence is a natural reaction in fibre cement products that can occur when moisture is present on the boards. To minimise this, we recommend storing boards indoors until they are ready for installation. Avoid installing boards while they are wet, as this increases the likelihood of efflorescence.

Ensure proper airflow behind the boards and along the perimeter of the cladding to allow sufficient ventilation. Please note that efflorescence deposits will eventually disappear as wind and rain naturally dissolve them.

AFTERCARE

To keep your fibre cement boards and aluminium trims in pristine condition, clean them periodically using lukewarm, soapy water with a soft cloth or brush. Always use a gentle detergent, and do not use high-pressure cleaning systems.

For marks or scratches that may accumulate over time or during installation, Cladco fibre cement touch-up paint can be used to restore the surface and maintain a flawless finish.



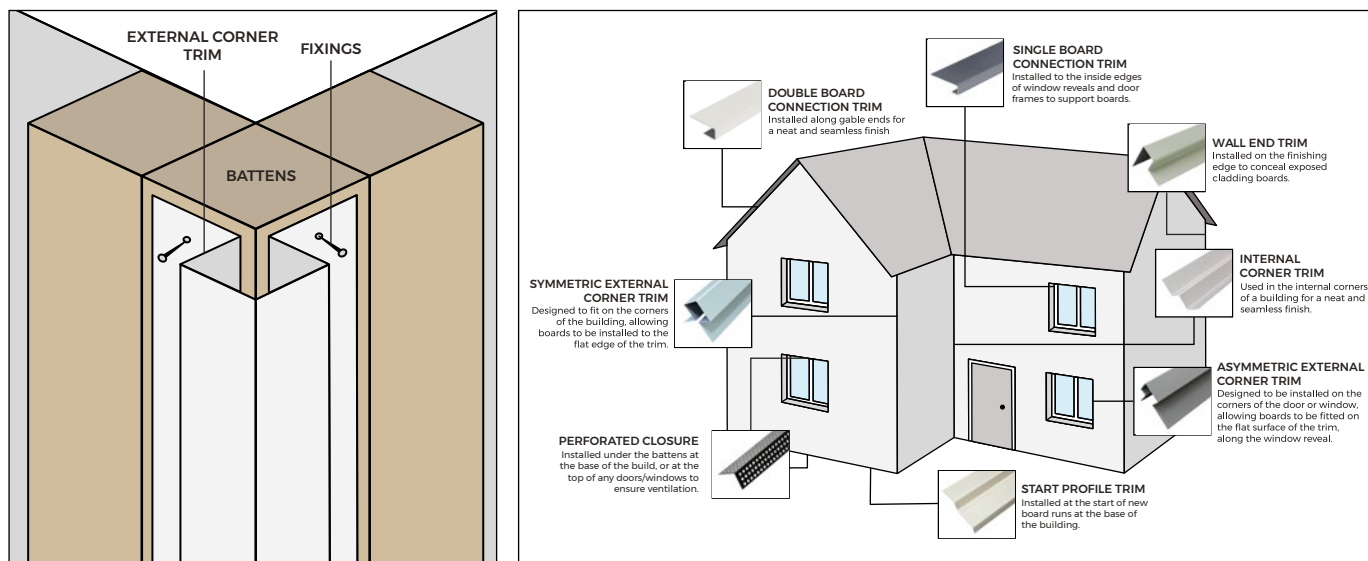
www.cladco.co.uk

T: 01837 659901 E: info@cladco.co.uk

CLADCO
PROFILES

INSTALLATION ADVICE

Measure the height of all external and internal corners of your building, as well as the height of windows and doors. Once measured, use Cladco straight cut tin snips to cut the symmetric corner trims (for external wall corners) to the correct sizes. Use 39mm screws to install each of the corner trims into place.



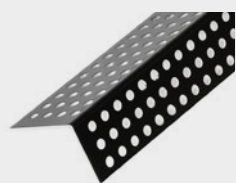
For detailed information about installation, please read our fibre cement lap installation guide.

IMPORTANT NOTICE

When working with fibre cement materials, it is essential to take proper care and follow necessary safety precautions. Cutting fibre cement boards releases fine dust into the air. While the mineral content itself is harmless, inhaling the dust can pose serious health risks.

To protect yourself, always wear a P3-rated respiratory protective mask when cutting fibre cement boards.

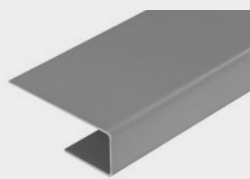
PRODUCT ACCESSORIES



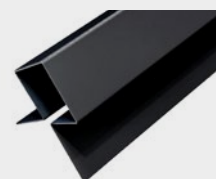
PERFORATED CLOSURE



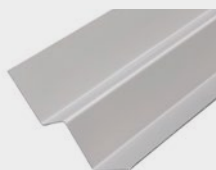
FIBRE CEMENT CLADDING BOARD



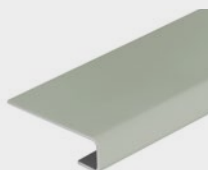
DOUBLE CONNECTION TRIM



START TRIM



INTERNAL CORNER TRIM



SINGLE CONNECTION TRIM



WALL END TRIM



ASYMMETRIC EXTERNAL CORNER TRIM