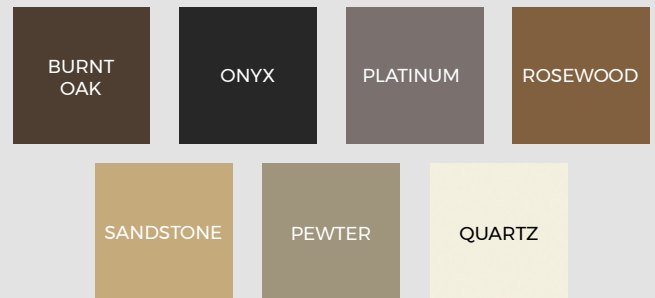


3.6M WOODGRAIN COMPOSITE CLADDING BOARD PROCLAD RANGE



Cladco ProClad composite wall cladding features a realistic woodgrain effect that replicates traditional timber surfaces. Engineered for superior protection against weather and UV rays, ProClad offers a durable, long-lasting solution to transform building exteriors with style and resilience.

COLOUR RANGE

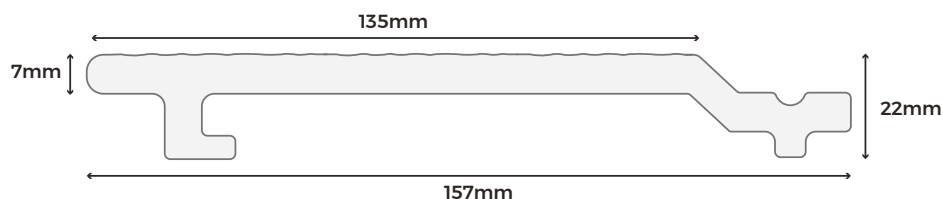


BOARD SPECIFICATIONS

Length	3.6m
Width	157mm
Thickness	22mm
Coverage	0.45m ²
Weight	6.15kg (approx)

TEST CERTIFICATIONS

FSC® Certification	SA-COC-005542	
SKU	Burnt Oak Onyx Platinum Rosewood Sandstone Pewter Quartz	WPCWEB36 WPCWEO36 WPCWEP36 WPCWER36 WPCWES36 WPCWEPE36 WPCWEQ36



Please Note: Images are for illustration purposes only. Actual products may vary slightly from those shown.



MATERIALS

Composite core made with a mix of 60% hardwood fibres and 40% recycled plastic, with a polymer capping.



SURFACES

These capped boards have an authentic woodgrain effect appearance.



ACCESSORIES

Complete your ProClad project with the corresponding capped corner trims and fascia boards.



LOW MAINTENANCE

Unlike timber or standard composite cladding, ProClad boards feature a protective capping that significantly reduces maintenance requirements.



WARRANTY

Cladco ProClad composite wall cladding comes with a 15-year warranty for your peace of mind.

RECYCLED MATERIALS

Cladco ProClad composite wall cladding features a core made from 100% recycled materials—comprising 60% recycled hardwood fibres and 40% recycled post-consumer plastics—to reduce environmental impact.

The ProClad range combines this sustainable core with a polymer protective shell, enhancing resistance to weathering, scratching, staining, and UV fading.

All Cladco composite products are available as FSC® Certified at no additional cost. Please specify if you require FSC® Certified products when placing your order.

AFTERCARE

Over time, ProClad boards may naturally collect dirt due to outdoor exposure. For everyday debris such as leaves, plants, berries, or animal droppings, simply brush the cladding with a broom.

For more stubborn dirt or grime, gently clean with warm, soapy water to restore the cladding's appearance.



www.cladco.co.uk

T: 01837 659901 E: info@cladco.co.uk

CLADCO
PROFILES

INSTALLATION ADVICE

Preparation

Battens should be spaced up to 500mm apart on exterior walls, with additional shorter battens installed every 200mm at gable ends to ensure full support for the ProClad boards.

Pre-drill Battens

Pre-drill both the battens and the surface beneath using a 6mm drill bit. Cladco composite battens are 30mm high and should be secured at least 50mm into the substrate.

Securing Boards

Use screws at least 20mm in length to fasten the boards securely to each batten. It is important to hand-tighten the screws to avoid over-tightening, which can damage the boards.



Adhering to these guidelines will help ensure proper installation and longevity of your ProClad capped composite wall cladding. Failure to follow these guidelines will invalidate the product's warranty.

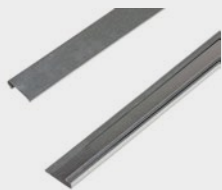
TEMPERATURE EXPANSION

Thanks to its capped polymer shell, ProClad composite boards are less affected by temperature fluctuations. This reduces expansion and contraction caused by heat and cold, making ProClad a highly stable cladding option.

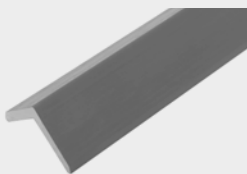
The polymer shell also offers enhanced protection against weather conditions and improves thermal insulation. This increased thermal performance helps regulate indoor temperatures, contributing to reduced heating and cooling costs.

For detailed installation instructions, please refer to our ProClad composite wall cladding installation guide.

PRODUCT ACCESSORIES



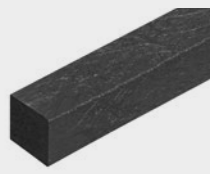
STARTER STRIPS



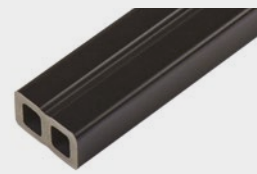
CAPPED COMPOSITE
CORNER TRIMS



CAPPED COMPOSITE
FASCIA BOARDS



RECYCLED PLASTIC
BATTENS



COMPOSITE BATTENS



www.cladco.co.uk

T: 01837 659901 E: info@cladco.co.uk

CLADCO
PROFILES