

STARTER/ BULLNOSE CLIPS PRODECK RANGE



Cladco ProDeck starter/bullnose clips help to create an accurate installation of your capped composite decking boards when being secured against a wall or fence. They provide peace of mind that the area is correctly fitted from the first to the last board, and will help ease the installation process by reducing the need to make changes and alter the position of the boards.



MANUFACTURED FROM
STAINLESS STEEL FOR A
DURABLE RESULT



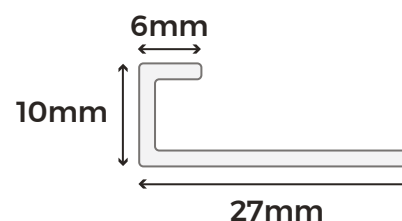
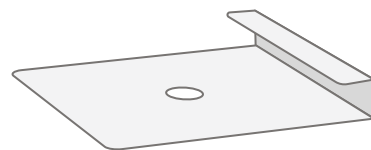
RESISTANT TO
CORROSION



EASY
INSTALLATION

STARTER CLIP SPECIFICATIONS

SKU	FIXWPCSCE
Length	27mm
Height	10mm
Material	Stainless Steel



Please Note: Images are for illustration purposes only. Actual products may vary slightly from those shown.



MATERIALS

The ProDeck starter/bullnose clips are made from stainless steel to provide stable fixing for your ProDeck composite decking.



SURFACES

These starter/bullnose clips ensure that the surface of your capped composite decking is stable and level.



ACCESSORIES

Can be used alongside the ProDeck T-clips and screws to create a secure and sturdy deck.



LOW MAINTENANCE

The stainless steel materials means that the starter clips are resistant to corrosion which minimises maintenance.



LONG-LASTING

These starter/bullnose clips are resistant to water and corrosion, making them a long-lasting addition to the stability of your ProDeck composite decking area.

Starter Clips

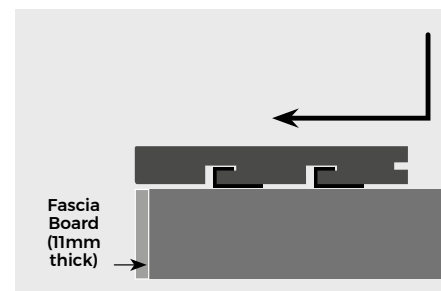
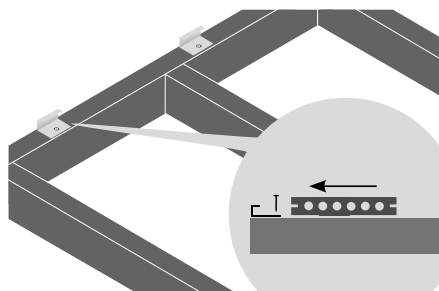
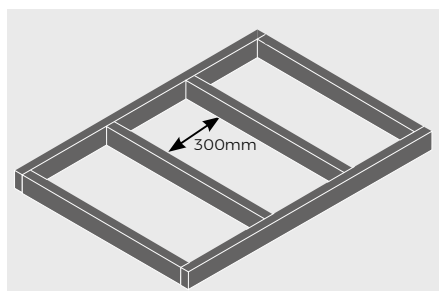
ProDeck starter/bullnose clips need to be fixed to the end of the joists before laying the first board, leaving a gap of at least 10mm between any walls and the starter clip.

Expansion Gap

Do not allow ProDeck capped composite boards to meet at the ends. T-clips will leave a 7mm expansion gap between each board to allow for expansion and contraction in temperature changes. It is not recommended that boards are installed in temperatures below 5°C.

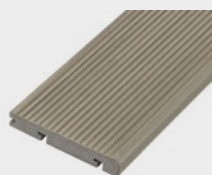
Last Boards

For the final two boards, measure the width of both boards together (including the 7mm expansion gap) to discover where the outer edge of the final board will lie and mark out with a pencil on the below joists. Use this mark to fit the final starter/bullnose clips and slot the last board into place using these clips.



Adhering to these guidelines will help ensure proper installation and longevity of your capped composite decking. Failure to follow these guidelines will invalidate the product warranty.

PRODUCT ACCESSORIES



PRODECK BULLNOSE
BOARDS



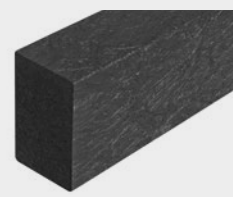
PRORANGE FASCIA
BOARDS



PRODECK DECKING
BOARDS



PRODECK
T-CLIPS



RECYCLED
PLASTIC JOISTS



www.cladco.co.uk

T: 01837 659901 E: info@cladco.co.uk

CLADCO
PROFILES