

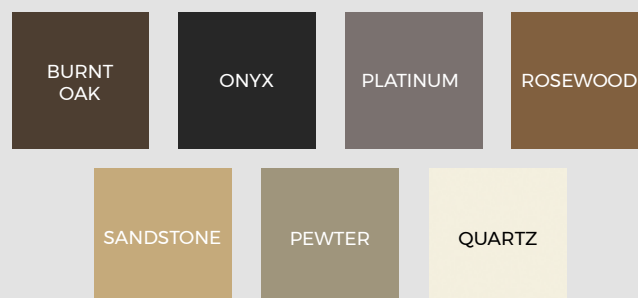
# 2.4M & 4M COMPOSITE DECKING BOARD PRODECK RANGE



\*In accordance with our installation guide, the ProDeck boards have 20-year warranty when installed with Cladco recycled plastic joists

ProDeck composite decking boards are reversible, with a stain and fade resistant polymer shell. Available in a choice of seven multi-tonal colours, ProDeck combines durability with versatility. One side features a detailed woodgrain effect, while the other has narrow grooves for enhanced low-slip properties. ProDeck boards come in two lengths - 2.4m and 4m.

## COLOUR RANGE

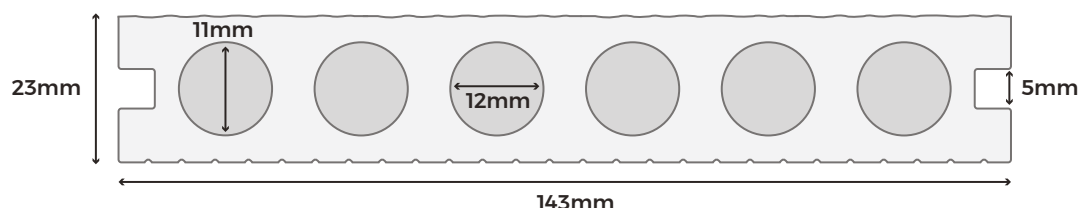


## BOARD SPECIFICATIONS

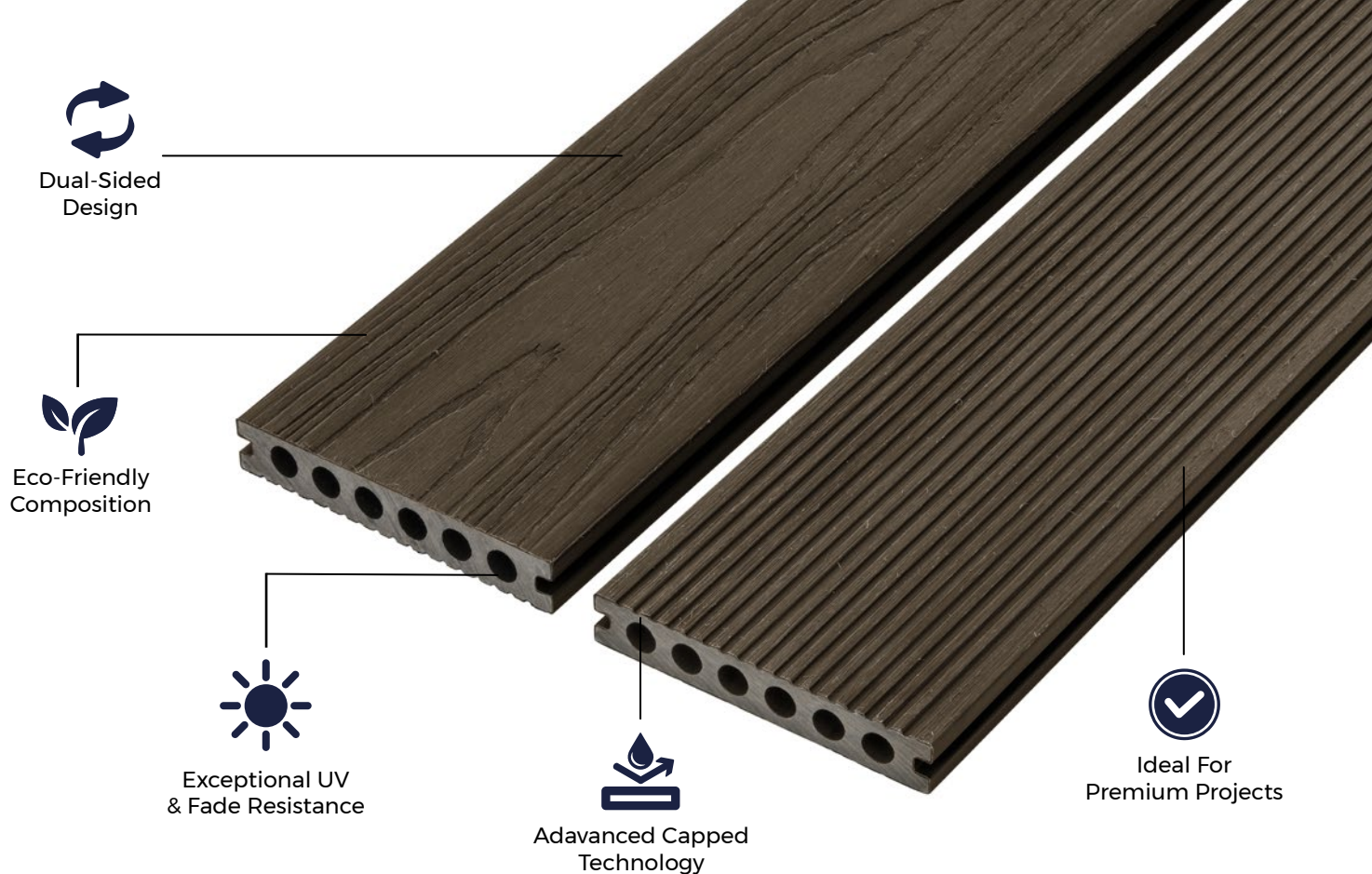
Length	2.4m & 4m
Width	143mm
Thickness	23mm
Coverage	0.36m <sup>2</sup> (2.4m) 0.6m <sup>2</sup> (4m)
Weight	16kg (approx)

## TEST CERTIFICATIONS

FSC® Certification	SA-COC-005542
SKU	<div> <div> Burnt Oak Onyx Platinum Pewter Quartz Rosewood Sandstone </div> <div> WPCEB24, WPCEB40 WPCEO24, WPCEO40 WPCEP24, WPCEP40 WPCEPE24, WPCEPE40 WPCEQ24, WPCEQ40 WPCER24, WPCER40 WPCES24, WPCES40 </div> </div>



**Please Note:** Images are for illustration purposes only. Actual products may vary slightly from those shown.



#### MATERIALS

Hollow composite core made with a mix of 60% hardwood fibres and 40% recycled plastic, with a polymer capping.



#### SURFACES

Boards feature a woodgrain effect on one side and narrow grooves on the other.



#### ACCESSORIES

Complement your ProDeck area with bullnose boards, fascia boards and corner trims for the perfect finish.



#### LOW MAINTENANCE

Unlike timber or standard composite decking, ProDeck decking boards require less maintenance.



#### WARRANTY

Cladco ProDeck boards are supplied with an extended 20-year warranty.

## TEMPERATURE EXPANSION

The capped surface of the composite core means that boards are less likely to be effected by temperature changes. It means that the ProDeck is more resistant to expansion or contraction due to heat and cold, making it a very stable option.

## RECYCLED MATERIALS

Cladco ProDeck boards have a core made from 100% recycled materials. The composite core is a mix of 60% recycled hardwood fibres and 40% recycled post-consumer plastics to help reduce our environmental impact.

Our ProDeck range has a polymer protective shell to increase the board's resistance to weather conditions, scratching, staining and fading due to UV rays.

All Cladco composite products are available as FSC® certified for the same cost. If you require FSC® certified products, please ask for these when placing your order.



[www.cladco.co.uk](http://www.cladco.co.uk)

T: 01837 659901 E: [info@cladco.co.uk](mailto:info@cladco.co.uk)

**CLADCO**  
PROFILES

## INSTALLATION ADVICE

### Starter Clips

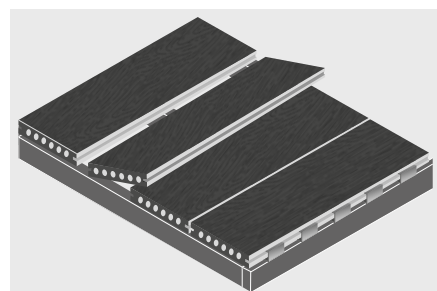
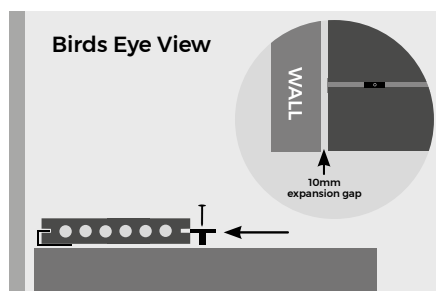
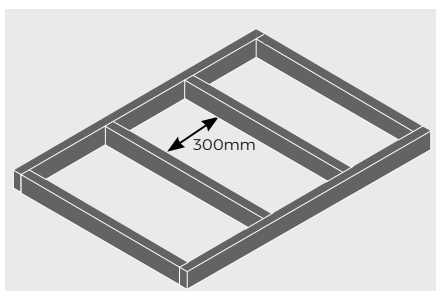
ProDeck bullnose/starter clips need to be fixed to the end of the joists before laying the first board, leaving a gap of at least 10mm between any walls and the starter clip.

### Expansion Gap

Do not allow ProDeck decking boards to meet at the ends. T-clips will leave a 7mm expansion gap between each board to allow for expansion and contraction in temperature changes. It is not recommended that boards are installed in temperatures below 5°C.

### Last Boards

For the final two boards, measure the width of both boards together (including the 7mm expansion gap) to discover where the outer edge of the final board will lie and mark out with a pencil on the below joists. Use this mark to fit the final bullnose/starter clips and slot the last board into place using these clips.



Adhering to these guidelines will help ensure proper installation and longevity of your capped composite decking. Failure to follow these guidelines will invalidate the product's warranty.

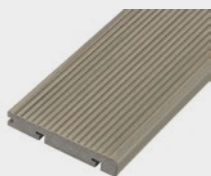
## AFTERCARE

Cladco ProDeck composite decking boards may naturally accumulate dirt over time due to outdoor conditions. For everyday debris such as plants, leaves, berries or animal droppings, simply brush your decking with a broom.

In cases of more stubborn dirt or grime, using warm soapy water may be necessary to restore the appearance of the decking.

For detailed information about installation, please read our ProDeck decking installation guide.

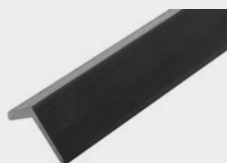
## PRODUCT ACCESSORIES



**PRODECK BULLNOSE  
BOARDS**



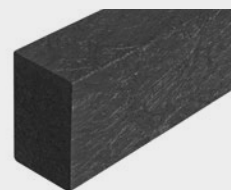
**PRORANGE COMPOSITE  
FASCIA BOARDS**



**PRORANGE  
COMPOSITE CORNER  
TRIMS**



**PRODECK  
T-CLIP FIXINGS**



**RECYCLED  
PLASTIC JOISTS**



[www.cladco.co.uk](http://www.cladco.co.uk)  
T: 01837 659901 E: [info@cladco.co.uk](mailto:info@cladco.co.uk)

**CLADCO**  
PROFILES