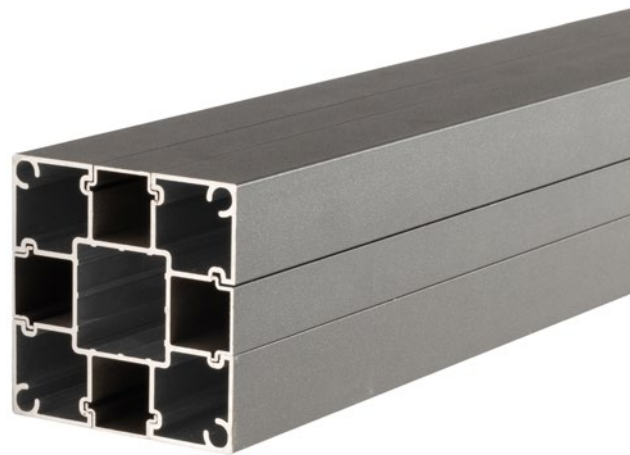


1.9M & 2.5M ALUMINIUM FENCE POST PROFENCE RANGE



Complete your ProFence installation with our ProFence aluminium posts. Available in two lengths, these fencing posts create a strong structure for your panels and feature adjustable channels to ensure they are suitable and adaptable for specific project requirements.

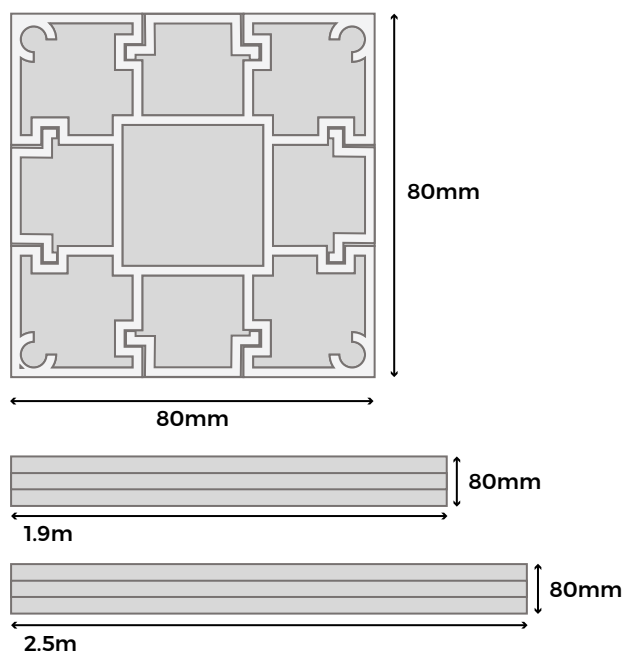
COLOUR RANGE

ANTHRACITE

POST SPECIFICATIONS

SKU	(1.9m) WPCFPE19-C, (2.5m) WPCFPE25-C
Length	1.9m or 2.5m
Width	80mm x 80mm
Weight (approx.)	4.26kg or 5.6kg
Material	Aluminium

Please Note: Alongside the ProFence aluminium post, a post cap is also included.





MATERIALS

Expertly crafted from high-quality aluminium, ProFence posts deliver strong, reliable support for your fencing system—ensuring lasting performance and structural integrity.



DURABILITY

These posts are highly resistant to rust, corrosion, and weathering, making them ideal for long-term outdoor use.



ACCESSORIES

Complete your Cladco ProFence project with matching ProFence panels, post foot, and post cap for a seamless, professional finish.



MINIMAL MAINTENANCE

Made from rust and corrosion-resistant aluminium, ProFence posts provide a durable fencing solution that requires minimal maintenance and stands up to the elements.



EASY TO INSTALL

ProFence posts are easy to install, featuring built-in sliding channels on all sides that allow panels to slot in quickly and securely.



EXPANSION GAP

While the capped shell of ProFence panels helps minimise expansion and contraction caused by temperature changes, some movement may still occur. We recommend leaving a 3mm expansion gap when installing panels into the aluminium post system. This ensures the panels fit comfortably within the post channels.

INSTALLATION ADVICE

Installing Posts into the Ground:

When using the 2.5m ProFence post, the excess length can be dug into the ground and secured with concrete. At least 25% of the post must be concreted into the ground.

Important: Before concreting the post in place, ensure the appropriate sliding channels are removed to avoid obstruction.

Installing Posts Using a Post Foot:

For the 1.9m ProFence post, use a post foot to secure it to the ground. The aluminium post slots directly onto the foot. To install, remove one sliding channel to allow the foot and post to connect securely, then fix the assembly to the ground.

Sliding Channels:

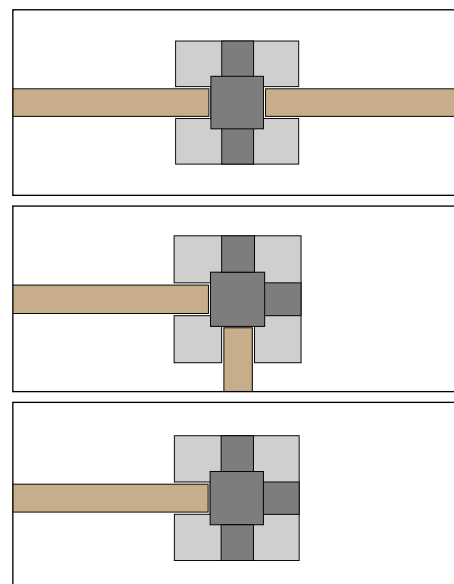
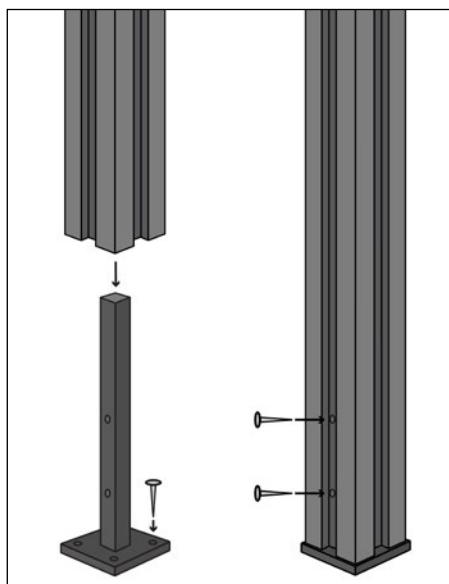
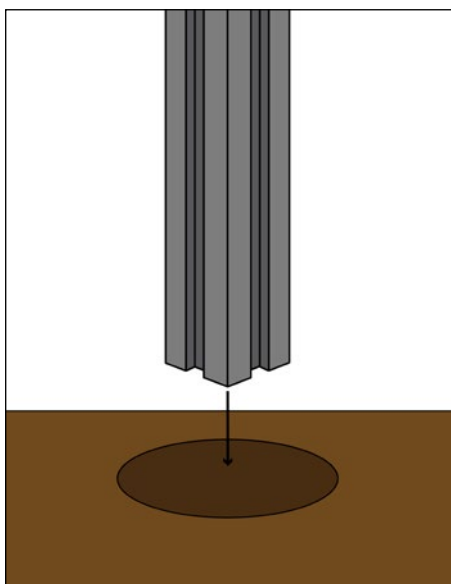
Each aluminium post includes four adjustable sliding channels, offering complete flexibility in your fence layout:

Mid-Posts: Remove the two opposing channels.

Corner Posts: Remove two channels that meet at a right angle.

End Posts: Remove one channel for a clean, streamlined finish.

Please note: For optimal support and stability, ProFence posts should be installed no more than 1.88 metres apart (centre to centre) or 1.8 metres apart (edge to edge).



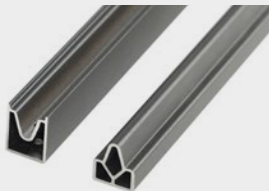
Adhering to these guidelines will help ensure proper installation and longevity of your ProFence composite fencing. Failure to follow these guidelines will invalidate the product's warranty.

For detailed information about installation, please read our ProFence installation guide.

PRODUCT ACCESSORIES



**PROFENCE
PANELS**



**TOP &
BOTTOM RAIL**



**PROFENCE
POST FOOT**



**PROFENCE
POST CAP**