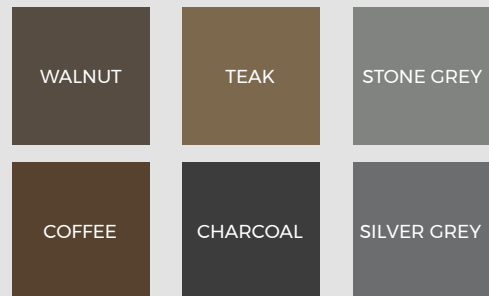


# 2.5M CLADDING BOARD COMPOSITE SLATTED CLADDING



Cladco composite slatted cladding offers a contemporary alternative to timber for exterior walls. With four slats per panel, our slatted wall cladding is simple to install with a tongue-and-groove design. Suitable for horizontal or vertical installation, the panel's hollow core construction ensures ease of handling and increased strength.

## COLOUR RANGE

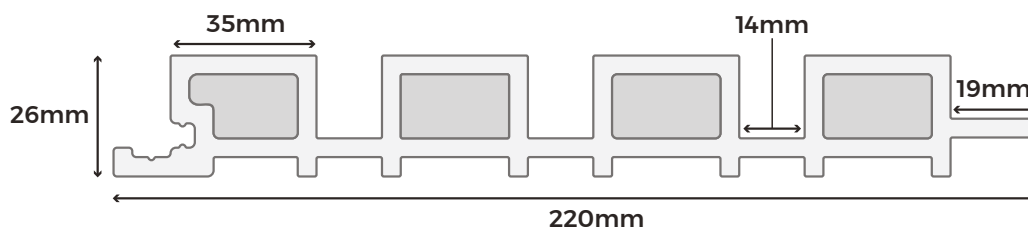


## PANEL SPECIFICATIONS

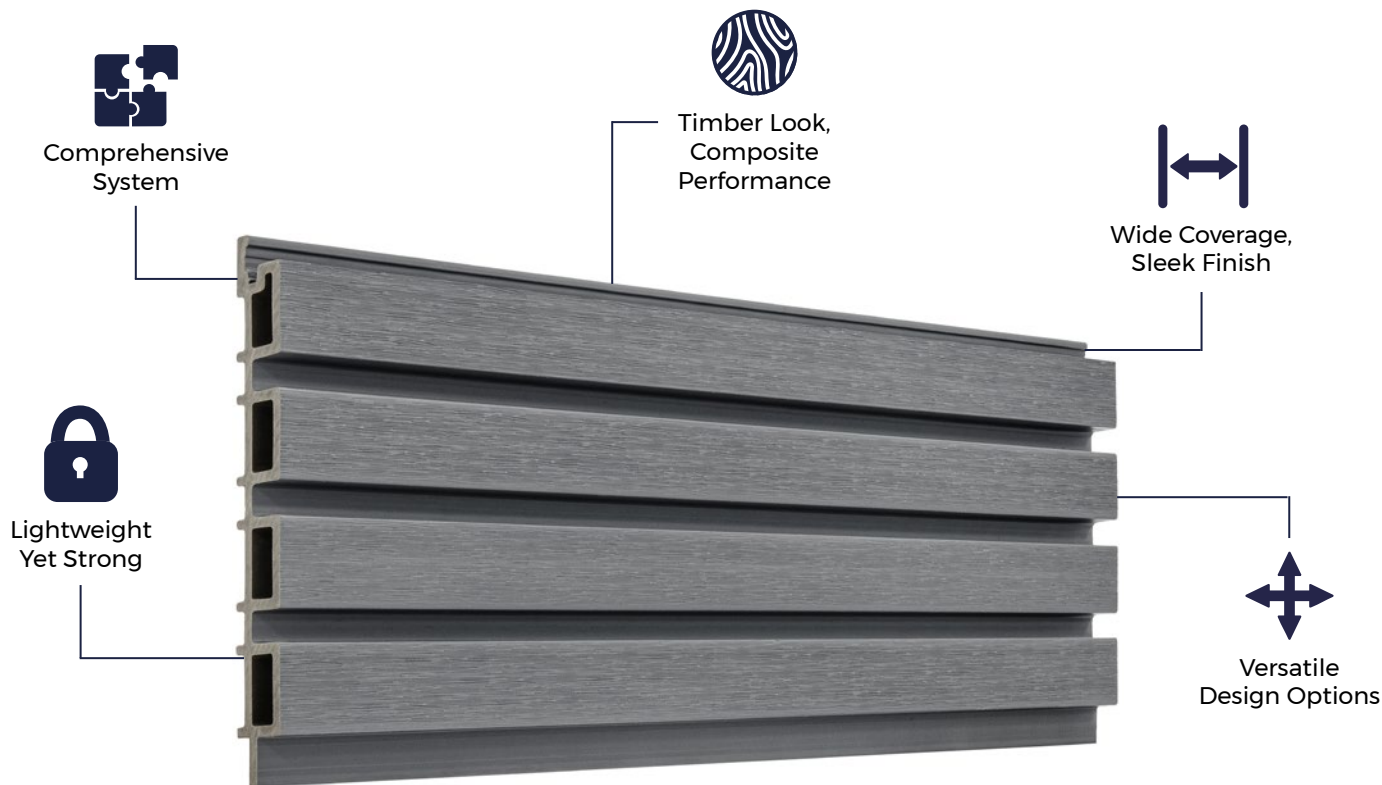
Length	2.5m
Width	220mm
Thickness	26mm
Coverage per Panel	0.5m <sup>2</sup>
Weight	7.58kg





## TEST CERTIFICATIONS

FSC® Certification	SA-COC-005542
SKU	Walnut Teak Stone Grey Coffee Charcoal Silver Grey
	WPCSLATW25 WPCSLATT25 WPCSLATS25 WPCSLATC25 WPCSLATB25 WPCSLATSG25



**Please Note:** Images are for illustration purposes only. Actual products may vary slightly from those shown.



 <h3>MATERIALS</h3> <p>Capped composite wood-plastic mix comprising 60% hardwood fibres, 40% recycled plastics.</p>	 <h3>SURFACES</h3> <p>Cladco composite slatted cladding features a textured woodgrain effect surface.</p>	 <h3>ACCESSORIES</h3> <p>Composite slatted cladding can be finished with a range of matching capped trims.</p>	 <h3>LOW MAINTENANCE</h3> <p>Unlike timber, capped external slatted cladding does not need to be sealed, stained or varnished.</p>	 <h3>WARRANTY</h3> <p>Cladco composite slatted cladding is supplied with a 15-year warranty for peace of mind.</p>
--	--	---	---	---

## RECYCLED MATERIALS

Cladco composite slatted cladding is manufactured using recycled materials, reducing our impact on the environment. A mix of 60% recycled hardwood fibres and 40% recycled, post-consumer plastics provides each panel with low-maintenance and long-lasting benefits.

Additional bonding agents are used to bind the materials to create a durable composite core, which is capped in a hard-wearing outer layer. All Cladco composite products are available as FSC® certified for the same cost. If you require FSC® certified products, please ask for these when placing your order.

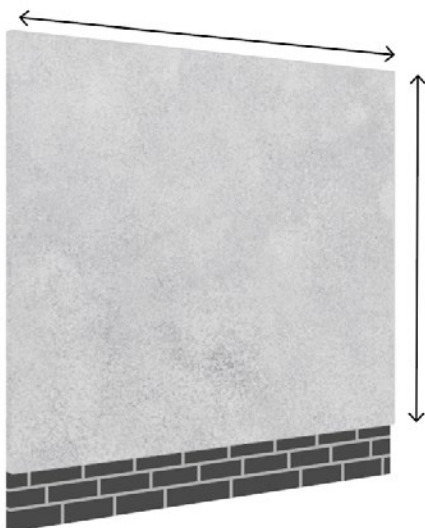
## AFTERCARE

For standard everyday debris such as plants, leaves, berries and animal droppings, simply clear these away with a brush. Regular maintenance is advised to keep your cladding clean. To do so, simply mix a light detergent and lukewarm water and use it on the panels with a soft cloth or brush.

## INSTALLATION ADVICE

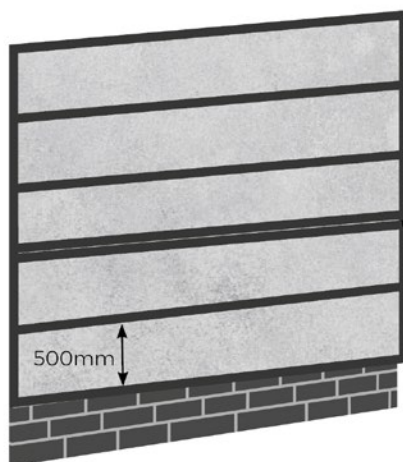
### Preparation

Prior to installation, it is important to review the overall stability of your wall to ensure appropriate support for battens under your slatted cladding panels.



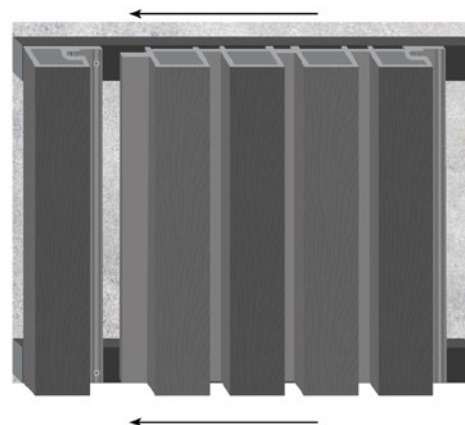
### Pre-Drill Battens

We recommend Cladco composite battens as the substructure of our external slatted cladding. When fixing battens to the surface, ensure there remains a gap of at least 500mm between each one.



### Securing Panels

After your chosen trims are installed, you can begin to slot your slatted cladding panels into place. Each panel will fit into each other with a tongue and groove method. To finish your cladding, we advise using our double end profile trims.



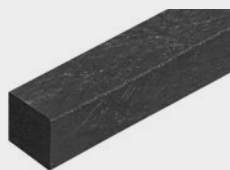
## NATURAL WEATHERING

Cladco composite wall cladding is manufactured with an encapsulated, non-porous outer layer. This capped shell protects the panels from weathering and reduces the effects of water and UV damage that could occur over time.

The extent and timeframe of weathering can vary based on the location and the exposure to sunlight that cladding panels receive. This is a normal process and part of the natural character of the material.

For detailed information about installation, please read our composite slatted wall cladding installation guide.

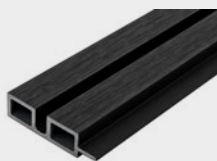
## PRODUCT ACCESSORIES



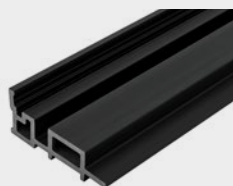
**RECYCLED  
PLASTIC BATTENS**



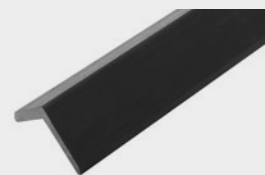
**SINGLE  
START TRIM**



**DOUBLE  
END TRIM**



**INTERNAL CORNER  
TRIM**



**CAPPED CORNER  
TRIM**